

Table of Contents

Welcome to Ulead BD DiscRecorder	2
System Requirements	2
Hardware checkup and configuration	3
Running BD DiscRecorder	3
Preferences	4
General	4
Capture	5
New/Append Disc	5
Introduction to the workspace	6
Capturing videos	7
Adding video files	10
Importing DVD video	11
Editing a program with Multi-trim video	12
Setting a name for a program	13
Exporting video	13
Burning your disc	15
Formatting a disc	16
Straight to Disc	16
Index	18

Welcome to Ulead BD DiscRecorder

With Ulead BD DiscRecorder, users can capture, edit, and save videos in the BDAV format for use with Blu-ray discs.

BDAV (Blu-ray Disc Audio-Visual) is the next-generation video format, making the future of High Definition videos a reality. It was created by the Blu-ray Disc Association (BDA) to bring HD technology and higher storage capacity to video editing.

System Requirements

To run BD DiscRecorder on your computer, make sure the following minimum requirements are met:

- Intel® Pentium® 4 2.8GHz CPU or higher
- Microsoft® Windows® XP Service Pack 2 or Media Center Edition
- 512MB of RAM
- 200MB of available hard disk space for program installation
- 4GB or more of hard disk space for video capture and editing
- Windows-compatible display with at least 1024x768 resolution
- Power BD drive (supporting recordable or re-writable Blu-ray discs)
- BD-R/RE single or double layer disc
- Windows-compatible mouse, display card, and sound card

To utilize the full capabilities of BD DiscRecorder, the following additional components are recommended:

- Capture devices such as DV or HDV camcorders
- OHCI compliant IEEE-1394 card for use with DV or HDV camcorder

Hardware checkup and configuration

To make sure your video production runs smoothly and trouble free, click **Control Panel: System - Hardware - Device Manager** and check if your devices are working properly with your Operating System (OS).

In general, as long as the device can be seen and working properly in the **Device Manager** (this applies to all Windows versions), BD DiscRecorder will be able to detect it and work with it.

Also make sure that a burner that supports Blu-ray discs is properly connected and configured and that you have the appropriate BD-R or BD-RE media for recording.

Running BD DiscRecorder

Run BD DiscRecorder from the program folder. Here, you can create a new video project (**New/Append Disc**) or capture and burn videos directly on a disc (**Straight to Disc**).



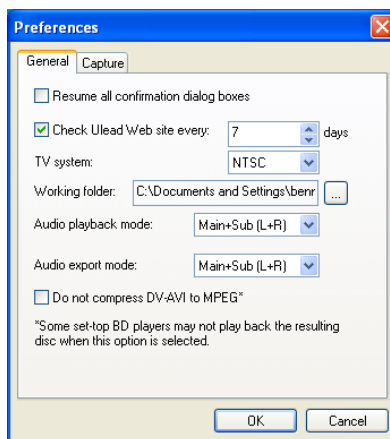
Preferences

The Preferences dialog box lets you determine most of the program settings. To open the Preferences dialog box, click **Settings and Options** and select **Preferences** or press [F6].

General

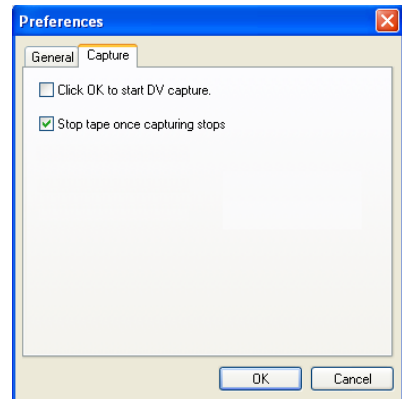
- **Resume all confirmation dialog boxes**
Overrides the “Do not show again” option and makes all confirmation dialog boxes appear.
- **Check Ulead Web site every XX days**
Specifies how frequently the program checks the Ulead Web site for news and updates.
- **TV system** Select the type of your TV system (NTSC or PAL/ SECAM).
- **Working folder** Enter or locate a folder for temporary files.
- **Audio playback mode** Determines how the audio streams of the video are played.
- **Audio export mode** Determines how the audio streams of the video are exported.
- **Do not compress DV-AVI to MPEG** Uses DV-AVI format to ensure best quality in capturing and burning instead of converting videos to MPEG format.

Note: Some set-top BD players may not play the resulting disc when this option is selected.



Capture

- **Click OK to start DV capture** Launches a confirmation message before performing the actual capturing process.
- **Stop tape once capturing stops**
Automatically stops the connected capture device in your computer once the program stops capturing.



New/Append Disc

BD DiscRecorder gives you an easy way to add or edit programs by capturing videos, adding video files, and importing DVD into your BDAV project.

A program is a video clip recorded by a set-top Blu-ray recorder, captured from a video source, or imported from a DVD video folder. A program can also be an existing video file.

You cannot capture copyrighted sources or videos protected by recognized protection schemes such as Copy Generation Management System for Analog (CGMS-A) and for Digital (CGMS-D), Content Scrambling System (CSS), Theatermark and Macrovision.

To create a new video project:

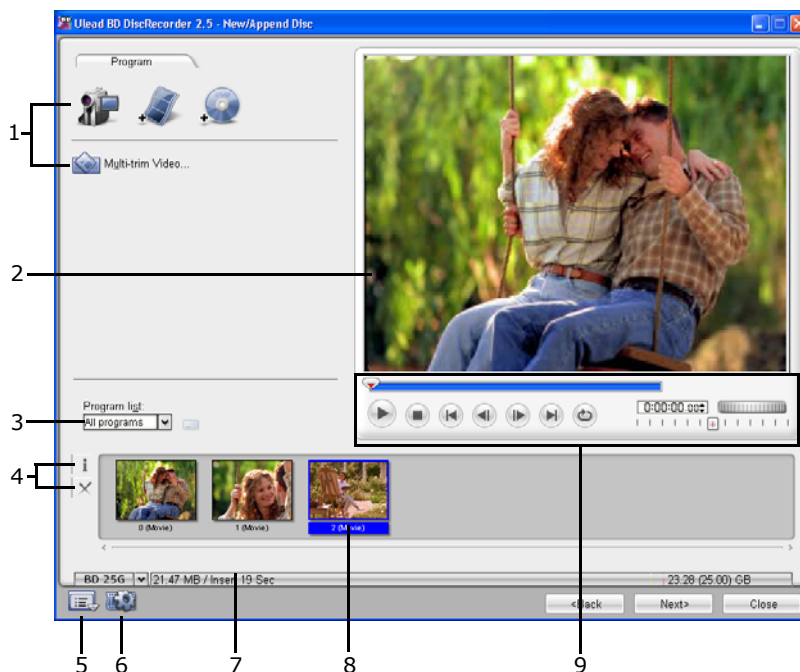
1. Click **New/Append Disc**.
2. Choose the burning mode for your new project. Click **New** to burn your project onto a new disc or **Append** to insert and burn new programs onto your BD disc. When appending a disc, select your BD drive from the **Select Drive** list.

Note: BD-R discs can be appended if your burner supports Pseudo OverWrite technology.

3. Click **Next**.

Note: When appending, the light gray colored area on the BD Capacity bar indicates the disc space already used by the current disc content.

Introduction to the workspace



- | | |
|---------------------------|----------------------------|
| 1. Add/Edit media buttons | 6. Project settings |
| 2. Preview window | 7. Show BD capacity |
| 3. Program list | 8. Program video clip list |
| 4. Remove and Info | 9. Navigation controls |
| 5. Settings and Options | |



- 1. Add/Edit media buttons** Use these buttons to add/edit videos.
- 2. Preview window** Use this to view your videos.
- 3. Program list** Select a program (video clip) to display in the Program video clip list.
- 4. Remove and Info** Use these buttons to remove programs or view program properties.

5. **Settings and Options** Click to open a menu where you can customize preferences, or view information about BD DiscRecorder.
6. **Project settings** Click to view information about the project and customize its output settings.
7. **Show BD capacity** Displays the total file size and video length to be used in the disc.
8. **Program video clip list** Shows the selected or all program thumbnails.
9. **Navigation controls** Use these buttons to preview your video clips.

Capturing videos

BD DiscRecorder lets you capture videos from DV and HDV camcorders.

To capture video from a DV camcorder:

1. Click **Capture** .
2. Select the device to capture from **Source**.
3. Select a capture mode and video format.
Note: You can only choose a video format with Dolby Digital 5.1 channel surround sound encoding if your DV camcorder uses 4-channel audio.
4. Use the navigation controls to locate the starting point of the video to capture.
5. Click **Capture video** .
6. Press **[Esc]** to stop. Repeat steps 2 to 7 as needed to capture more videos.
7. Click **OK**.

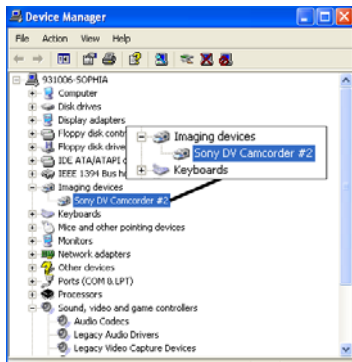


Capturing High-Definition video (HDV)

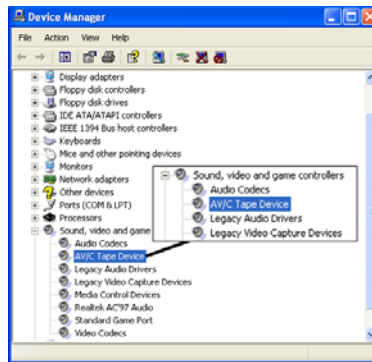
Before capturing your HDV or HD video into BD DiscRecorder, make sure that your camcorder (or deck) is properly detected by your computer. Also check the following:

On Sony HDV camcorder:

If you have connected your Sony HDV camcorder before to your computer, check the **Device Manager** to see if your camcorder is detected as a **DV device** or **AV/C tape device**. If the camcorder is detected as a DV device, you can capture DV footage. If your camcorder is detected as an AV/C tape device, you can capture HDV footage.





DV mode



HDV mode

Note: The Sony HDV camcorder can be detected only under Windows XP Service Pack 2.

To capture video from an HDV camcorder:


1. Connect your HDV camcorder to your computer's IEEE-1394 port using the IEEE-1394 cable.
2. Turn on your camcorder and switch it to **Play** mode.
3. If you have a Sony HDV camcorder, make sure it is switched to **HDV** mode.
4. Click **Capture** .
5. Select the device to capture from **Source**.
6. Click **Advanced Settings** and select **Capture Options**. In the **Device Control** dialog box, select **HDV 1394 Device Control** in **Current Device** drop-down list. Click **OK**.
7. After defining your capture options, click **Advanced Settings** and select **Change Capture Plug-in**. Choose **Ulead HDV Capture Plug-in** from the **Current Capture Plug-in** list, and then click **OK**.
8. Use the navigation controls to preview your project or move around your programs.
9. Click **Capture Video**  to start capturing. Press **[Esc]** to stop capturing.

- 10.Repeat steps 8 and 9 to add more clips. Click **OK** after capturing to go back to the **Add/Edit Media** page.

Adding video files

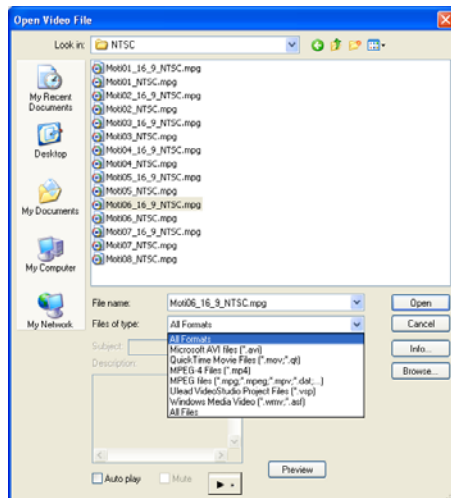
You can add video files of different formats such as **AVI**, **MPEG**, **WMV**, and others to your movie.

To add a video file to your project:

1. Click **Add Video**  to open the **Select Files** dialog box.
2. Browse for videos on your computer and select video files(s). Use **[Ctrl]** or **[Shift]** to select multiple files or click **Select All** to add all video files to your project.

Note: When adding MPEG-2 Transport Stream (*.m2t) videos, BD DiscRecorder converts it into MPEG-2 Program Stream (PS) for editing, then back to *.m2t when burning project onto disc.

3. Click **Open**.




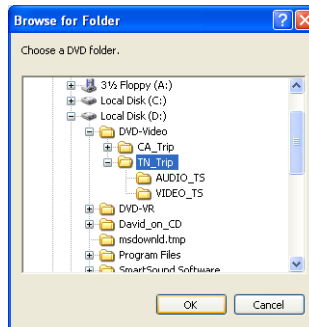
4. When adding multiple clips, drag the clips according to your desired sequence in the **Change Clip Sequence** dialog box, and then click **OK**.

Importing DVD video

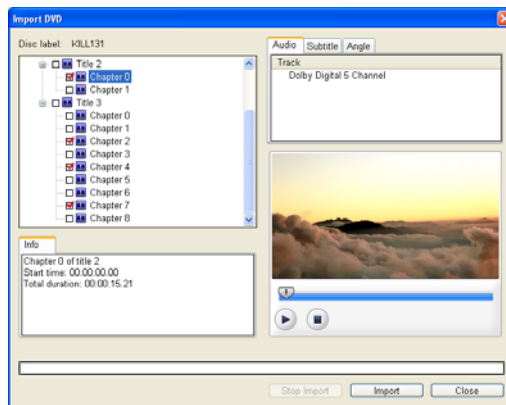
You can also import DVD videos (non-copyrighted videos only) into your movie.

To import DVD video:

1. Click **Import DVD Video** .
2. Locate the folder that contains the video files. Specifically, find the **VIDEO_TS** folder on a disc (DVD+R/RW or DVD-R/RW) or hard drive, or the **DVD_RTAV** folder for DVD-VR files on a disc (DVD-RW or DVD-RAM) or hard drive.





3. Select the video clip, and then click **Import**.



Editing a program with Multi-trim video



Multi-trim video lets you select multiple segments from a video and extract these segments to the Program video clip list.

To use Multi-trim Video:

1. Select the video to be trimmed in Program video clip list.
2. Click  **Multi-trim Video...** to open the **Multi-trim Video** dialog box.
3. Drag the **Jog Slider** to locate the start of the segment to retain/delete, and then click **Mark-in** or press **[F3]**.
4. Drag the Jog Slider to locate the end of the segment to retain/delete, and then click **Mark-out** or press **[F4]**. The extracted segment will be added to the Program video clip list.
5. To select more segments, repeat steps 3 and 4.
6. To remove any extracted segment from the list, select it in the Program video clip list and click **Remove selected clips** .
7. To preview all extracted clips, click **Play**.
8. Click **OK**.



Tips:


- To move the **Jog Slider** at a fixed interval, use  or . Set the time interval at **Quick search interval**.
- Click **Invert Selection** to select or deselect selected video segments.

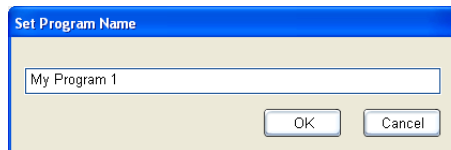
Note: Applying Multi-trim Video will replace the original program with the trimmed video (program).

Setting a name for a program

You can assign names to programs in order to easily identify them.

To set a program name:

1. Select a program from the **Program list**.
2. Click **Set program name** .
3. Enter the name, and then click **OK**. The new name is shown in the Program list.



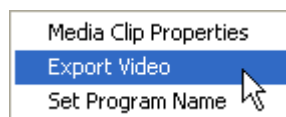
Exporting video

BD DiscRecorder lets you easily export your video clips in a program into other video formats (AVI, MPEG, WMV, etc.). To speed up the workflow, you can also create templates for video settings that you frequently use.

Note: You can decide which audio channels to export by adjusting the **Audio export** mode on the **General** tab of the **Preferences** dialog box.

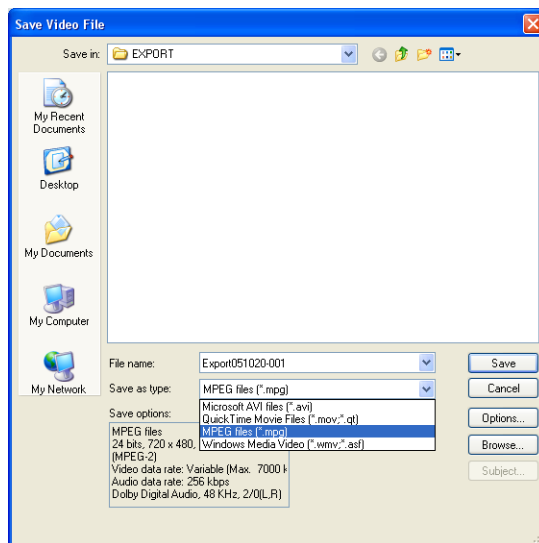
To export video files:

1. Select the video clip you want to export from the **Program video clip list**.
2. Right-click the video clip. Select **Export Video**.



3. Select a file type (and the following settings if needed).

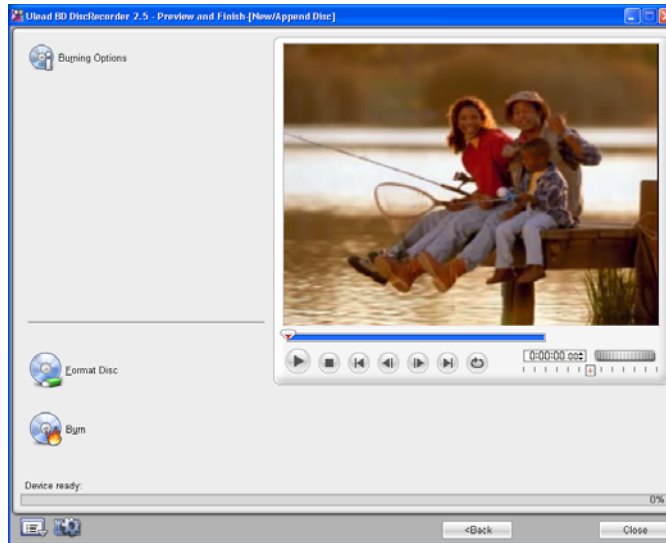
- To use a template, click **Template** and select the one to be used. Select **Add Template** to create a new template using the current video settings. Select **Delete Template** to delete templates.
- To change the video settings, click **Options** to open the **Video Save Options** dialog box. Click **OK** when finished.



4. Select the folder to save the file and enter the file name.
5. Click **Save**.

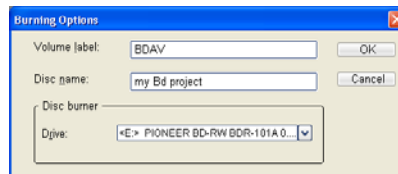
Burning your disc

After creating the contents of your BDAV project, click **Next** to move to the **Preview and Finish** page. You are now ready to burn it onto a disc.




To burn your disc:

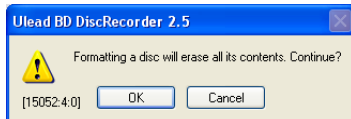
1. Use navigation controls to preview your movie.
2. Click **Burning Options** and specify the following settings:
 - **Volume Label** The disc label name as seen in Windows Explorer.
 - **Disc name** The disc name as seen in set-top Blu-ray recorder.
 - **Disc burner** The burning device that contains the disc.



3. Click **Burn** to begin the burning process.

Formatting a disc

You can also choose to format your disc first before burning. A BDAV disc must be formatted using UDF 2.5 (Universal Disc Format) for rewritable discs. To format a disc, click  and then click **OK** to start.



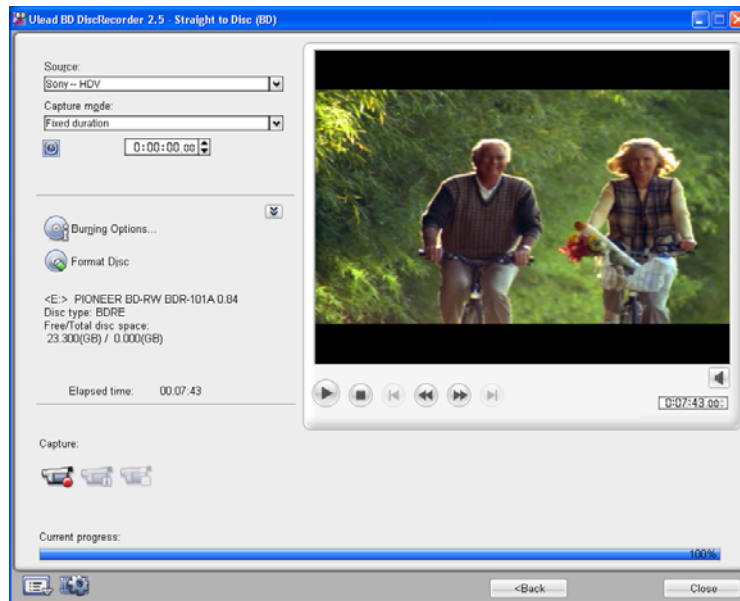
Notes:

- BD-R discs can be appended if burner supports UDF 2.6 file system.
- Format Disc is also available on the Straight to Disc page.

Straight to Disc


BD DiscRecorder provides a fast way to capture videos and then burn them directly onto a disc in the BDAV format. When this task is selected, BD DiscRecorder will initially check both your burner and disc to ensure that there are no problems with your output device and media.

Note: If you want to capture and burn in the DV-AVI format, select **Do not compress DV-AVI to MPEG** in **Preferences**. You must set this before choosing the **Straight to Disc** task.



To capture video directly onto a disc:

Make sure your video source is switched on and properly connected to your computer.

1. Insert a disc into the burner. Then click **Straight to Disc** and click **Next**.
2. Select the device to capture from **Source**.
3. Select a capture mode (for example, select fixed duration, marked duration, or full DV tape if capturing from DV camcorder). Click **Show/Hide Options Panel**  to view additional settings as needed.
4. Select the capture format.
Note: If you are capturing in the DV-AVI format, you must set the **Capture format** to AVI.
5. Click **Burning Options** to set the volume name and disc burner to use.
6. Locate the starting point of your video to capture, and click **Start capture**. Click **Pause capture** to pause the capturing process. Click **Stop capture** to end the capturing process.

Index

A

Add/Edit media buttons 6

Adding video files 10

B

Burning your disc 15

C

Capturing videos 7

E

Edit and info 6

Exporting video 13

F

Formatting a disc 16

H

Hardware checkup and configuration 3

I

Importing DVD video 11

Introduction to the workspace 6

M

Multi-trim video 12

N

New/Append Disc 5

P

Preferences 4

Program list 6

Program video clip list 7

Project settings 7

R

Running BD DiscRecorder 3

S

Setting names 13

Settings and options 7

Show BD capacity 7

Straight to Disc 16

System Requirements 2