

Ulead DVD MovieFactory® 6

*User Guide
InterVideo Digital Technology Corporation
January 2007*

Ulead DVD MovieFactory® 6

Copyright © 2007 InterVideo Digital Technology Corporation. All rights reserved. No part of this publication may be reproduced or transmitted in any form or by any means, electronic or mechanical, including photocopying, recording or storing in a retrieval system, or translated into any language in any form without the express written permission of Corel Corporation.

Software license

The software described in this document is furnished under a License Agreement, which is included with the product. This Agreement specifies the permitted and prohibited uses of the product.

Licenses and trademarks

ICI Library © 1991- 1992 C-Cube Microsystems.

Copyright © 2007 InterVideo Digital Technology Corporation. All Rights Reserved. Corel, the Corel logo, Ulead, the Ulead logo, Ulead DVD MovieFactory, InterVideo, the InterVideo logo, WinDVD and InterVideo DVDCopy are trademarks or registered trademarks of Corel Corporation and/or its subsidiaries.

Intel, the Intel logo, Core 2 Duo and the Core 2 Duo logo are trademarks or registered trademarks of Intel Corporation or its subsidiaries in the United States and other countries. Microsoft, Windows, Vista, and other Microsoft products referenced here in are either trademarks or registered trademarks of Microsoft Corporation in the United States and/or other countries. Apple, QuickTime and the QuickTime logo are trademarks of Apple Computer, Inc., registered in the United States and other countries. QuickTime and the QuickTime logo are trademarks used under license. Adobe, the Adobe logo, Acrobat, the Acrobat logo are Trademarks of Adobe Systems Incorporated. Macromedia, Flash and Macromedia Flash are trademarks or registered trademarks of Macromedia, Inc. in the United States and internationally. Avery is a trademark of Avery Dennison Corporation. Manufactured under license from Dolby Laboratories. Dolby and Double-D symbol are trademarks of Dolby Laboratories. Blu-ray Disc and Blu-ray Disc Logo are trademarks and/or registered trademarks licensed by Sony Corporation on behalf of Blu-ray Disc Association (BDA). LabelFlash and the LabelFlash logo are trademarks and/or registered trademarks of the Yamaha Corporation. DivX is a registered trademark of DivX, Inc. "AVCHD" and "AVCHD" logo are trademarks of Matsushita Electric Industrial Co., Ltd. and Sony Corporation. All other product names and any registered and unregistered trademarks mentioned are used for identification purpose only and remain the exclusive property of their respective owners.

Protected by U.S. Patent 6,121,976; Taiwan Patents 079758 and 147957.

Template files

Files provided as samples on the program CD can be used for personal demonstrations, productions and presentations. No rights are granted for commercial reproduction or redistribution of any sample files.

North & South America

<http://www.ulead.com>

Support: <http://www.ulead.com/tech>

Germany

<http://www.ulead.de>

Support: <http://www.ulead.de/tech>

United Kingdom

<http://www.ulead.co.uk>

Support: <http://www.ulead.co.uk/tech>

France

<http://www.ulead.fr>

Support: <http://www.ulead.fr/tech>

International

<http://www.ulead.com>

<http://www.ulead.com.tw>

Support:

<http://www.ulead.com/tech>

<http://www.ulead.com.tw/tech>

Japan

<http://www.ulead.co.jp>

Support: <http://www.ulead.co.jp/support>

China

<http://www.ulead.com.cn>

Support: <http://www.ulead.com.cn/tech>

Table of Contents

Welcome to Ulead DVD MovieFactory	7
Authoring BDMV video	7
Authoring AVCHD video	7
Authoring HD DVD Advanced Content Video	7
The DVD MovieFactory Launcher	8
Video/Slideshow Disc	9
Audio Disc	9
Data Disc	9
Import/Capture	9
Edit/Append Disc	9
Copy Disc	9
Disc Tools	9
Preferences	9
Disc information	10
Drive information	10
Label@Once	10
The DVD MovieFactory host program	11
Start Project	11
Edit Disc	11
Straight Capture to Disc	11
Video/Slideshow Disc	12
Starting a new project	12
Output disc types	12
Opening an existing project	13
Adding media	13
Capture video	14
Add video files	18
Add photo slideshow	19
Import DVD video or DVD-VR files from a disc or hard drive	20
Editing Media	22
The right-click menu	23
Trimming a video	23
Edit Room/Edit Slideshow	24
Join/Separate videos	28

Multi-trim Video	29
Edit Subtitle	30
Add/Edit Chapters	31
Export Selected Clips	32
Creating Menus	33
Menu template categories	34
Applying menu templates	35
Editing menu templates	35
Using motion menus	36
Customizing menu templates	36
Manipulating objects	37
Editing menu thumbnail and text style	38
Preview	38
Burning your disc	39
The Burning Options dialog box	41
Straight Capture to Disc	43
Settings and tools	44
16:9 DVD	45
Audio Disc	46
Data Disc	46
Import/Capture	46
Edit/Append Disc	47
Copy Disc	47
Disc Tools	48
Format Disc	48
Erase Disc	48
Close Disc	48
Tools	49
Settings and options	49
Open	49
Save	49
Save As	49
Preferences	49
Disc Template Manager	51
Ulead DVD MovieFactory Help	51
Product Updates on the Web	51

Online Registration	51
About Ulead DVD MovieFactory	51
Exit	51
Project settings	52
Display aspect ratio	53
Label@Once	53
Label@Once dialog box	53
Creating custom paper templates	55
Designing from scratch	56
Designing based on an existing project	57
Designing based on a playlist	58
Importing a disc label	58
Saving a disc label	58
Printing a disc label	58
Appendix: Important information	59
Installing a capture card	59
Connecting a video camera to the computer	59
DV or Digital 8 camcorder	59
Connecting the camcorder to the IEEE-1394 interface	59
Checking the hardware setup	59
HDV camcorder	60
Analog video sources	60
Connecting the video device to the analog capture card	60
Connecting a TV antenna to the tuner card	61
Connecting the capture or tuner card to the sound card	61
Checking the hardware setup	61
Glossary	62
Index	64

Welcome to Ulead DVD MovieFactory

Ulead DVD MovieFactory provides you with the answer to your disc-authoring needs. Instantly create high definition BDMV (Blu-ray Disc Movie Video), AVCHD (Advanced Video Codec High Definition), HD DVD Advanced (High Definition DVD Advanced Content) and DVD, VCD, and SVCD video or slideshow discs.

You can also enhance your video by adding transition effects, text, audio, interactive menus, and many others, or print disc label or cover to make your discs more attractive and interesting.

With DVD MovieFactory, creating professional-looking video or slideshow discs has never been easier.

Note: The availability of program modules and HD-related functions depends on the DVD MovieFactory version you have.

Authoring BDMV video

You can author BDMV movies and burn them onto 50GB or 25GB Blu-ray discs that you can play on your PS3 or home Blu-ray player.

You can burn your BDMV discs using a Blu-ray disc burner and output compliant BDMV folders in your hard drive.

Authoring AVCHD video

You can author AVCHD video and burn them onto a DVD disc using a standard DVD burner. You can burn AVCHD video onto the following DVD disc media: DVD-R, DVD-RW, DVD+R, and DVD-RW. You can use both 8cm or 12cm DVD discs.

You can play your AVCHD video on your PS3 or home Blu-ray Disc player.

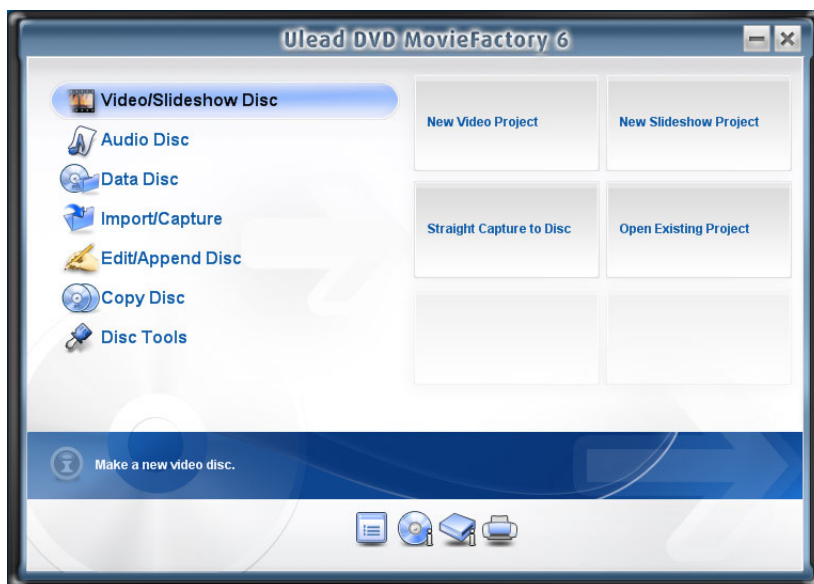
Notes: Output to AVCHD folders in your hard drive and creation of AVCHD disc image files are not supported in this version.

Authoring HD DVD Advanced Content Video

HD DVD with advanced interactivity is known as HD DVD Type 2 or Advanced Content (iHD). In MovieFactory HD Pack, you can create pop-up menus that appear without interrupting playback. This allows the viewer to navigate the content of the disc while watching the movie.

The DVD MovieFactory Launcher

The DVD MovieFactory launcher (run from the icon on the desktop, Start menu, or from the program folder) serves as a control panel where you can find the tasks for disc editing and authoring.



To use the launcher:

1. Select a task by clicking the **Video/Slideshow Disc**, **Audio/Data Disc**, **Import/Capture**, **Edit/Append Disc**, **Copy Disc**, or **Disc Tools** icon.
2. Select an associated task option at the right hand side.

Notes:

- You can also click any tool icon located at the lower part to set project preferences, view disc and burner information, or create disc labels.
- Opening previously created project files from outside the DVD MovieFactory launcher will automatically launch the associated program.



Video/Slideshow Disc

Click to create a new project, open an existing one, or perform other burning tasks. See ["Video/Slideshow Disc"](#) for more details.



Audio Disc

Click to create an MP3, Audio CD, DVD-Audio, Music DVD-Video, or CD Extra disc. See ["Audio Disc"](#) for more details.



Data Disc

Click to create a data disc, secured data disc, bootable disc, or a DivX disc. See ["Data Disc"](#) for more details.



Import/Capture

Click to capture content from your camcorder and other devices or import content from a DVD. See ["Import/Capture"](#) for more details.



Edit/Append Disc

Click to append data or edit video/MP3 files on a disc. See ["Edit/Append Disc"](#) for more details.



Copy Disc

Click to create a copy of a disc or convert DVD and video formats for use on your projects. See ["Copy Disc"](#) for more details.



Disc Tools

Click to format, erase, or close a disc. See ["Disc Tools"](#) for more details.



Preferences

Click to set your working folder, view product updates, register online, or view program information.



Disc information

Click to view the properties of the disc in your CD, DVD, HD DVD, or Blu-ray disc burner.



Drive information

Click to view the properties of your CD, DVD, HD DVD, or Blu-ray disc burner.

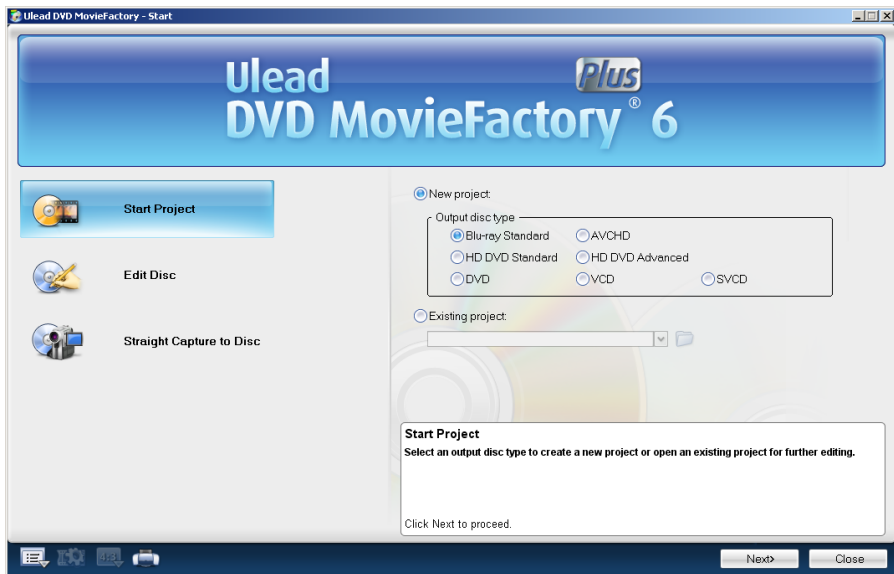


Label@Once

Click to open **Ulead Label@Once** and create a label for your CD, DVD, HD DVD, or Blu-ray disc. [See "Label@Once" for more details.](#)

The DVD MovieFactory host program

You can also start disc authoring and editing tasks by directly opening the DVD MovieFactory host program. Click **Start: All Programs - Ulead DVD MovieFactory 6 - Ulead DVD MovieFactory 6**. The **Start** window opens for you to select task options.



Start Project

Click to create a new project or open an existing one.



Edit Disc

Click to edit content on a rewritable disc.



Straight Capture to Disc

Click to capture content from your camcorder and other devices.

Video/Slideshow Disc

Ulead DVD MovieFactory's step-by-step interface makes creating movies simple and easy.

Starting a new project

To start a new video/slideshow project using the **Launcher**, click **Video/Slideshow Disc** and then click **New Video Project/New Slideshow Project**.

The program automatically detects the type of disc in your burner and launches a new project that matches the detected disc type. If no disc is detected, the default project type, DVD 4.7G, will be used.

To start a new project in the **Start** window of the host program, click **Start Project**, select **New project**, and select **Output disc type**. Click **Next** to continue.

Output disc types

- **Blu-ray Standard** This type of disc uses a blue-violet laser to read and write data. The shorter wavelength allows more data to be stored. A single layer Blu-ray Disc can store 25 gigabytes (GB). A dual layer Blu-ray Disc can store 50 GB.
- **AVCHD (Advanced Video Codec High Definition)** AVCHD uses the MPEG-4 AVC (H.264) video codec. The superior compression technology allows quality video to be produced at a lesser file size. The audio and video data come in an MPEG-2 Transport stream format.
- **HD DVD Standard (High Density DVD)** Developed as a standard for high-definition DVD, HD DVD is similar to the Blu-ray Disc, which uses a 120 mm diameter optical data storage media and 405 nm wavelength blue laser.
- **HD DVD Advanced (High Definition DVD Advanced Content)** Also known as HD DVD Type 2, this format is based on the "HDi" standard. It offers interactive features and enhanced content.
- **DVD** Abbreviation for Digital Versatile Disc, a popular format in video production because of its superb audio and video quality. It also holds several times more data than VCDs and SVCDs.
- **VCD (Video Compact Disc)** is a special version of a CD-ROM that uses the MPEG-1 format. The quality of the exported movie is almost the same, but usually better than VHS tape-based movies. A VCD can be played back on a CD-ROM drive, VCD player, and even on a DVD player.

- **SVCD** Abbreviation for Super Video CD, commonly described as an enhanced version of a VCD. It is based on MPEG-2 technology with either Variable Bit Rate (VBR) or Constant Bit Rate (CBR).

Opening an existing project

To open an existing project from the **Launcher**, select **Open Existing Project** and browse for the project file.

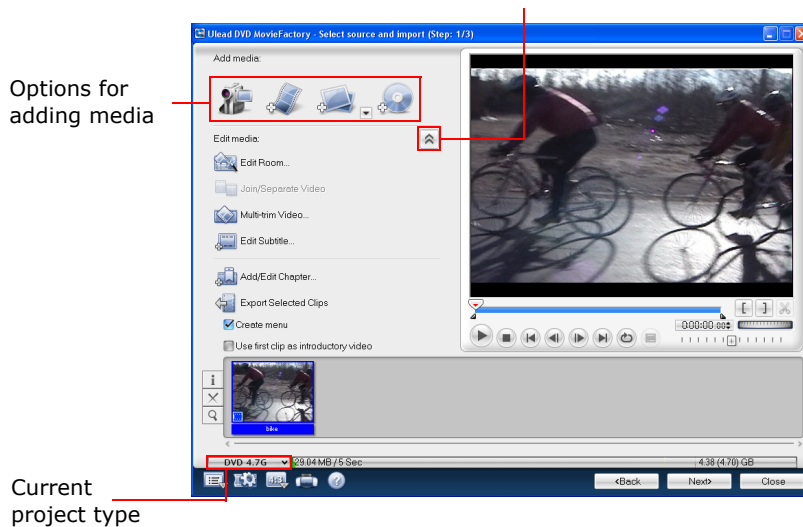
You can also open an existing project within the host program. In the **Start** window, click **Start Project** and select **Existing project**.

Adding media

Whether you are using the **Launcher** or the host program, creating a new project or opening an existing one, takes you to **Select source and import (Step: 1/3)**. Here, you can select options under **Add Media** to add content to your movie.

You can add content to your movie by capturing videos, adding video files, creating and adding slideshows, and importing DVD videos.

Toggle between showing and hiding advanced options





Capture video

Ulead DVD MovieFactory is capable of capturing video from different video sources such as DV and HDV camcorders and VCRs, analog devices, and TV tuners.

Capturing is the process of transferring video from your camcorder or other video sources to your computer. When you have properly set up your equipment for capturing, the video feed from your source device should be visible when you play the source tape in the **Preview Window** of the **Capture Video** dialog box. If your display card supports TV output connection, you will be able to view your video on a TV monitor.

Capture source devices are categorized into three classes: Analog TV, Digital TV, and DV Camcorder/HDV Camcorder. To capture video, click **Import** and then **Capture from Devices** in the **Launcher**. You can also click **Capture video** in the **Select source and import (Step: 1/3)** page.

Capturing DV video


DVD MovieFactory allows you to capture digital video and automatically store it in your selected format.


To capture DV video:

1. Connect your camcorder to the IEEE-1394 interface card. Turn it on and set it to **Play** (or VTR /VCR) mode.
2. In the **Select source and import (Step: 1/3)** page, click **Capture video**



The **Capture Video** dialog box opens. The DV device connected to your computer is displayed in the **Source** list.

3. Select a capture **Mode**:
 - **Fixed duration** sets the total duration to be captured.
 - **Full DV tape** captures the whole DV tape from tape start to end.
4. To adjust the capture options, click  .
 - **Format** allows you to select the file format of the captured video.
 - **Capture folder** shows the path of the folder where captured videos are saved. Click **Select capture folder** to select a different folder.
5. Click **Play** in the **Navigation Panel**.

6. When you get to the part of the video to record, click **Start Capture** . Click **Stop Capture** or press **[Esc]** to stop capturing. The captured video will be added to the **Captured videos** list.
7. Repeat steps 5 and 6 to add more clips. Click **OK** after capturing to go back to the **Select source and import (Step: 1/3)** page. The captured clips are displayed in the **Media Clip** list.

Note: Click **Full Screen** to toggle between the expanded or original view of the **Preview Window**.

Capturing High-Definition video (HDV)



Before capturing your HDV or HD video, make sure that your camcorder (or deck) is properly detected by your computer.

On Sony HDV camcorder

If you have connected your Sony HDV camcorder before to your computer, check the **Device Manager** to see if your camcorder is detected as a **DV device** or **AV/C tape device**. If the camcorder is detected as a DV device, you can capture DV footage. If your camcorder is detected as an AV/C tape device, you can capture HDV footage.

Note: The Sony HDV camcorder can be detected under Windows XP with Service Pack 2 and Vista.

To capture video from an HDV camcorder:

1. Connect your HDV camcorder to the IEEE-1394 interface card. Turn it on and set it to **Play/Edit** mode.
2. If you have a Sony HDV camcorder, make sure it is switched to **HDV** mode.
3. In the **Select source and import (Step: 1/3)** page, click **Capture video**  to open the **Capture Video** page. The source device connected to your computer is displayed in the **Source** list.
4. Use the **Navigation Panel** to go to the start of the section of the video where you want to start capturing and click **Start Capture** .

Capturing analog video

DVD MovieFactory allows you to capture videos not only from digital sources, but also from analog sources.

To capture video via an analog capture card:

1. Connect your video source device to your capture card. On some cards, you may also need to connect the audio cables. for S-video, please remember to connect the audio cable properly since S-video only transfers video signals.
2. In the **Select source and import (Step: 1/3)** page, click **Capture video**. Follow the remaining steps as described in the procedure for capturing DV video. See ["Capturing DV video"](#) for more details.

Capturing TV footage

DVD MovieFactory allows you to capture TV footage with a TV tuner. Capture a segment of your favorite television show on regular TV or cable then save it in your hard drive in AVI or MPEG format.

To capture TV footage:

1. Check if your computer has an analog video capture card with a TV input jack. This jack usually uses a TV coaxial cable to input TV signals from either an antenna or a dedicated cable from your CATV supplier.
2. Connect your video source device to your capture card. On some cards, you may need to connect the audio cables.
3. In the **Select source and import (Step: 1/3)** page, click **Capture video**.
4. Select your analog device from the **Source** list.
5. Select the appropriate capture **Mode**.
6. Select the channel name and number in **TV channel**.

Note: You can click **TV Manager** to edit the list of channels in the **Channel List** dialog box.

7. Select the appropriate video format from the **Format** list.
8. Click **Start Capture** to start capturing.
9. Click **Stop Capture** or press **[Esc]** to stop capturing.

Capturing still images

In addition to video, DVD MovieFactory allows you to capture still images in BMP or JPEG. The dimensions of the captured image will depend on the frame size of the source video.

To choose your image format:

1. Return to the **Select source and import (Step: 1/3)** page and press **[F6]** to open the **Preferences** dialog box.
2. Click **Capture** tab and select the appropriate format in the **Captured image format**.
3. Specify the image quality (applicable only for JPEG format).
4. Click **OK**.

To capture still images:

1. Follow the steps in preparing to capture a video. See ["Capturing DV video"](#) for more details.
2. Scan your video to search for the part to capture.
3. When you get to the part of the video frame you want to capture, click **Capture Image**.

Tip: You can also capture a still image from a video clip in the **Select source and import (Step: 1/3)** page. Select the video clip from which you want to capture the still image and use the navigation buttons to locate the frame. Right-click the **Preview Window** and select **Capture Image**. You will then be prompted to save the captured image to your local folder.

Capturing video directly to MPEG format

DVD MovieFactory allows you to capture video from a DV camcorder or analog source straight to MPEG.

To capture video in MPEG format:

1. Connect your camcorder or VCR to your capture card. Switch it on and set it to **Play/Edit** (or VTR/VCR) mode.
2. Select a DVD, VCD, SVCD, or MPEG format in **Format**.
3. Click **Start Capture** to start capturing.
4. Click **Stop Capture** or press **[Esc]** to stop capturing.

Note: A DVD player connected to an amplifier using an audio-optical-fiber cable may not be able to produce sound when playing an NTSC DVD with MPEG audio.

Set Auto Capture to DVD

Ulead DVD MovieFactory allows you to set delayed recording times when capturing from different sources to DVD. You can specify the capture source, the time to start recording and the total recording duration.

To use Set Auto Capture to DVD:


1. Set the **Capture Mode** to **Set Auto Capture**. Then choose your recording source.
2. Set the **start time** and **capture duration** of the recording session.
 - The maximum total duration of recording depends on your available disc space.
 - If the start time is earlier than the current time, DVD MovieFactory will start to record the day after.
3. Click **Start Auto Capture** to start the task. If you need to reset the start time and duration, click **Stop Capture** and reset the values before restarting the task.



Add video files

DVD MovieFactory allows you to add video files of different formats such as AVI, MPEG, and WMV into your video project. You can also add a VideoStudio project (.VSP). You can also directly add MTS and M2TS files to your project.

To add a video file to your project:

1. Click **Add video files**  in the **Select source and import (Step: 1/3)** page to launch the **Open Video File** dialog box.
2. Locate the video file(s). You can select and add multiple files under the same folder. Press **[Ctrl]** or **[Shift]** to select multiple files.
3. Repeat the above process to add more video files.



Add photo slideshow

Aside from video files, you can also add photo slideshows complete with multiple background music or sound annotations, as well as transition and pan & zoom effects.

To add a slideshow:

1. Click **Video/Slideshow Disc** in the **Launcher** and then click **New Slideshow Project**. You can also click **Add Slideshow** in the **Select source and import (Step: 1/3)** page.





Note: To add image folders and subfolders by group, select **Batch Collect**.




2. The **Add Slideshow** dialog box opens.
3. Locate the folder that contains your image files in the **Add SlideShow** dialog box and select the images to include. Use **[Ctrl]** or **[Shift]** to select multiple images.
4. Click **Add Photo**. Repeat step 3 to add more images.

Tip: Click **Add All** to include all the photos in the current directory.

5. Add a slideshow title, background music, transition effect, and other enhancements as needed.
6. Click **Preview** to see the result.
7. Click **OK** after you have finished.

There are a number of features to improve your slideshow project:

- Click **ExpressFix**  to fix common digital photo problems. You can adjust quality.
- Click **Record a sound annotation to the selected photo**  to record voiceover for a selected image.
- Like in video projects, add chapter points by selecting a photo and clicking **Set current photo as chapter** . To auto-set chapters at a regular interval, click **Auto set chapter**  and set the value for the interval.

- Click  to add a blank color slide.
- Click  to apply transition effects
- Click  to apply preset or customized pan & zoom effects. **Pan & Zoom** animates your background image by moving it from one fixed point to another and changing the viewing distance.
- Select **Match slideshow duration with background music duration** to make the slideshow length the same as the length of the slideshow audio

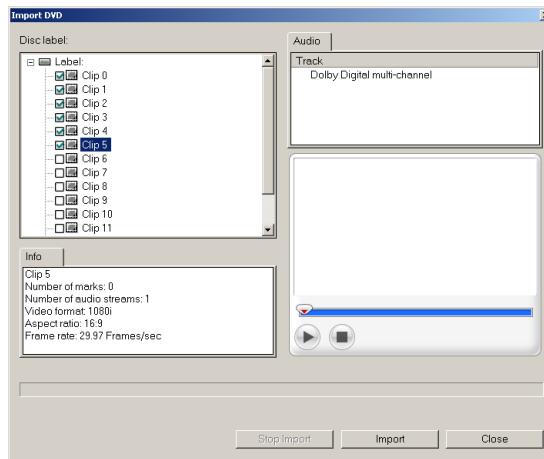


Import DVD video or DVD-VR files from a disc or hard drive

Import video from your DVD discs or hard drive and add them to your video projects. You can import all the DVD files or simply select specific titles and chapters. (Program imports track 1 audio in default.)

DVD MovieFactory also allows you to import **AVCHD** video, a format developed by Sony and Panasonic-parent Matsushita. This format supports various resolution/frame-rate combinations and can encode audio in either 5.1 channel AC-3 or up to 7.1 channel Linear PCM.

DVD MovieFactory also supports dual channel audio input so you can include the video's main audio channel and/or the sub channel if available.



To import DVD and AVCHD video:

1. Click **Import/Capture** and then **Import from DVD** in the **Launcher**. You can also click **Import DVD Video** or **DVD-VR files from a disc or hard drive** in the **Select source and import (Step: 1/3)** page.
2. The **Select a DVD Title** dialog box opens.
3. Locate the DVD drive that contains the video files and click **Import**.

Note: Click **Import DVD Folder** to search your hard drive for the video files. Browse for the DVD folder and click **OK**.

4. The **Import DVD** dialog box opens.
5. In the left pane, select the video clips to import.
6. Click **Import**. The imported video files are displayed in the **Media Clip** list.

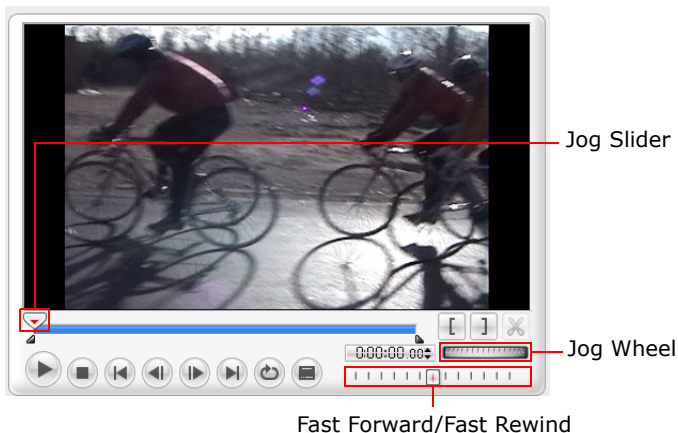
Notes:

- Use the playback controls in the Preview Window to view each video clip or chapter.
- Black video thumbnails that appear in the **Media Clip** list indicate that the first frame in the video is either white or black.
- The number of chapters, angles, audio, and subtitle streams of the selected title track are displayed in **Info** located on the left pane below **Disc label**.

Editing Media

After importing the media files into your project, you can now play and edit the content using DVD MovieFactory's playback controls and editing tools.

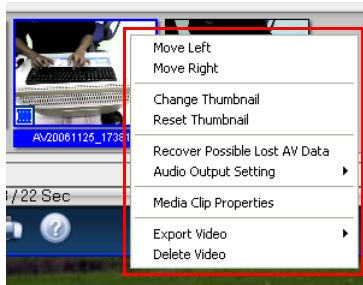
When editing, there are many ways to browse through a video clip. You can use the navigation control buttons or go to a specific timecode. You can also use the **Jog Wheel**, which works the same way as the one found in most VCRs, to browse through the video more quickly. Or you can use the **Fast Forward/Fast Rewind** to view the video clip at a constant playback speed.



Tip: When using the Jog Wheel, you can browse through a video by moving the scroll wheel on the mouse back and forth.

The right-click menu

Right-click a thumbnail in the **Media Clip** list to display a context menu that gives you access to more options.





- **Move Left/Right** Changes the position of the selected clip in the Media Clip list.
- **Change Thumbnail** Changes the current thumbnail display.
- **Reset Thumbnail** Restores the original thumbnail display.
- **Recover Possible Lost AV Data** Retrieves lost data from captured videos.
- **Audio Output Setting** Includes audio data when exporting video.
- **Media Clip Properties** Displays the file, video, and audio properties of the selected media clip.
- **Export Video** Allows you to save your video into a specific format.
- **Delete Video** Removes the selected clip from the Media Clip list.

Trimming a video

You can trim a video using the **Jog Slider**, mark-in/out buttons, navigation controls, **Shuttle Slider**, and **Jog Wheel**. Trimming allows you to modify the length of the video according to your needs.

To trim video:

1. Select a video thumbnail in the **Media Clip** list.
2. Use the navigation controls or drag the **Jog Slider** to where the clip will start and click  or press **[F3]**. Alternatively, simply drag **Mark-in** to the starting point.
3. Use the navigation controls or drag the **Jog Slider** to move to the point where the clip will end then click  or press **[F4]**.
4. Click **Play** (or press **[Space]**) to view the trimmed video.



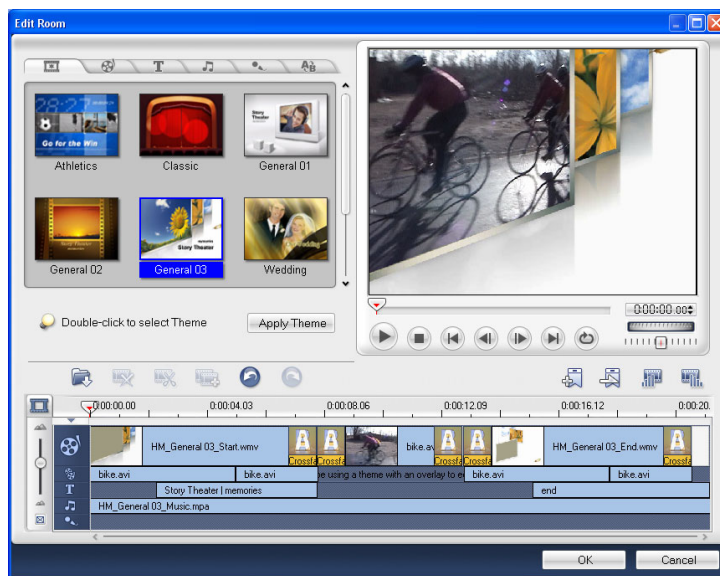
Edit Room/Edit Slideshow

Edit Room/Edit Slideshow lets you improve the quality of a video clip or slideshow by adjusting its current properties or adding new features such as sound and transition.

Enhancing a video clip

Select a video clip and click **Edit Room** to open the **Edit Room** dialog box. It features 6 **Task tabs**, each with a corresponding set of options. You can use the **Preview Window** and the **Storyboard/Timeline** to view and fine tune your edits. You can also add chapter points, insert/remove clips, apply fade in/out effects, and perform other basic editing functions.

Note: If you edited the subtitles of the selected video clip in **Edit Subtitle**, all the subtitle settings you applied will be removed when you click **Edit Room**.



The Theme tab

The Theme tab allows you to apply preset themes. The Theme Panel lists theme templates that are applicable to the currently selected video clip. Double-click a theme to apply it or select a theme and click **Apply Theme**.

The Video Track tab

The **Video Track tab** allows you to edit the properties of a video clip.

Options for the Video Track tab

- **Video Duration** Shows the length of the selected clip in hours, minutes, seconds, and frames.
- **Clip Volume** Increases or decreases the volume of the clip
- **Set Mark-in/Mark-out** Sets the starting and ending points of a clip
- **Multi-Trim Video** See “Multi-trim Video” for more details.
- **Split Video** Divides a video clip according to detected scene changes.
- **Auto Enhance Video** Adjusts the brightness of a clip.

The Text tab

The **Text** tab allows you to add and format text.

To add text to your video:

1. In the **Text** tab, drag the **Jog Slider** or use the playback controls to move between frames in the video. Stop when you reach the point where the text will be added.
2. Double-click the **Preview Window** to enter the text. Specify the duration, font type, size, color, and other properties.
3. Repeat steps 1 to 2 to add more text. You can use the playback controls to preview the result. The text will not overlap each other.

Tip: To edit added text, double-click and modify it as you would in a word processor. To delete text, select it and press **[Delete]**.

4. Click **OK**.

Options for the Text tab

- **Text Duration** Specify how long the text will be displayed.
- **Font Face** Click to select typeface.
- **Font Size** Click to select font size from 5 to 128 pts.
- **Font Vertical** Changes the orientation of the text vertically.
- **Transparency** Enter a value or drag the slider to adjust the transparency of the text.
- **Shadow** Applies shadow to your text.

Show/Hide Advanced Options Toggles between showing and hiding the settings for the text shadow.

X-offset Determines the horizontal distance between the text and the shadow.

Y-offset Determines the vertical distance between the text and the shadow.


Transparency Enter a value or drag the slider to adjust the shadow transparency of the text.

The Music tab

The Music tab allows you to add background music to your video.

To add music:

1. In the **Music** tab, click **Add Audio** to locate the audio file to add. The added audio files are displayed on the list below **Add Audio**.
2. To preview and trim an audio file or apply fade-in/out effects, click **Audio**

Properties . The duration of all audio files in your project is displayed in **Audio Duration**.

Note: Even if the audio is trimmed or edited, the actual audio playback duration remains the same as the video playback duration. Audio playback will loop if the video duration is longer.

3. To remove a previously added music, select it on the list then click **Delete**

Audio .

4. Adjust the volume for the original audio track, additional audio file, and recorded voice annotations respectively. Click **Play** to preview the result.
5. Click **OK**.

Options for the Music tab


- **Add Audio** Click to locate an audio file to be used as background music for your video. The added audio files are displayed on the list below it.
- **Move Audio Up** Moves selected file up the list
- **Move Audio Down** Moves selected file down the list
- **Delete Audio** Removes selected file
- **Audio Properties** Opens the **Audio Properties** dialog box to view properties, play, trim, and fade in/out your audio file.

- **Audio Duration** Displays the duration of the audio track in hours: minutes: seconds: frames. You can also pre-set the length of the recording by entering the desired duration.
- **Audio Volume** Adjusts the volume level of the recorded clip.
- **Audio Fade In** Gradually increases the volume of the clip.
- **Audio Fade Out** Gradually decreases the volume of the clip.
- **Mute** Click to disable a specific audio clip.

The Voice tab

The Voice tab allows you to add voice annotation to your video.

To add a voice annotation:

1. Drag the **Jog Slider** or use the playback controls or the **Jog Wheel** to move between frames in the video. Stop when you reach the point where the annotation will be inserted.
2. Click **Record Voice**  and test your microphone (adjust the volume as needed), then click **Record** to start.

Options for the Voice tab

- **Record Voice** Click **Record Voice** to start recording. This changes into **Stop Recording Voice** during the recording process. Click this to end recording. A new clip in the **Voice Track** on the **Timeline** is created.
- **Voice Clip List** Displays the list of recorded voice files.
- **Delete Voice Clip** Removes selected file
- **Voice Clip Properties** Opens the **Audio Properties** dialog box to view properties, play, trim, and fade in/out your audio file.
- **Voice Duration** Displays the duration of the audio track in hours: minutes: seconds: frames. You can also pre-set the length of the recording by entering the desired duration.
- **Voice Volume** Adjusts the volume level of the recorded clip.
- **Voice Fade In** Gradually increases the volume of the clip.
- **Voice Fade Out** Gradually decreases the volume of the clip.
- **Voice Mute** Click to disable the selected voice clip.

The Effect tab

The **Effect** tab displays various options that you can use to apply transition effects to your video clip. You can also add a transition effect anywhere in the video.

Options for the Effect tab

- **Add/Change Effect** Click to open the **Effect** dialog box. Add or modify an effect by selecting it and clicking **OK**. You can also double-click an effect to apply it.
- **Effect Duration** Allows you to specify the length of the selected transition effect.
- **Effect Name** Displays the names of currently applied effects.

Note: To remove an effect, select it in the **Storyboard/Timeline** and press **[Delete]**.

Editing a slideshow


To edit your slideshow, select the slideshow thumbnail from the **Media Clip** list and click **Edit Slideshow**. Modify the selected slideshow in the **Edit Slideshow** dialog box.



Join/Separate videos

Join/Separate Video lets you combine two or more video clips, or separate previously combined video clips.

To combine/separate video clips:

1. Press **[Ctrl]** or **[Shift]** and click on two or more clips in the **Media Clip** list.
2. Click  **Join Video** to combine the selected clips.

To separate the previously combined videos, select the video clip from the **Media**

Clip list and click  **Separate Video**.








Multi-trim Video

Multi-trim Video lets you select multiple segments from a video and extract these segments to the **Media Clip** list.

Note: **Multi-trim Video** cannot be applied to video clips previously edited using **Edit Room**.

To use Multi-trim Video:

1. Select the video to be trimmed in the **Media Clip** list.
2. Click  to open the **Multi-trim Video** dialog box.
3. Drag the **Jog Slider** to locate the start of the segment to retain, and then click  or press **[F3]**.
4. Drag the **Jog Slider** to locate the end of the segment to retain, and then click  or press **[F4]**. The extracted segment will be added to the **Media Clip** list.

Tip: To move the **Jog Slider** at a fixed interval, use  or . Set the quick search interval in **Duration**.


5. To select more segments, repeat steps 3 and 4.

Tips:

- **Quick search interval** allows you to set a fixed interval between frames and browse through the movie using the set value.
- You can also click **Invert Selection** to select all unmarked segments instead.

6. Click **OK**.

Tips:

- Click  **Play Trimmed Video** to view the extracted segments.
- To remove any extracted segment from the list, select it in the **Media Clip** list and click **Remove selected clips**.



Ad-Zapper

Ad Zapper lets you search your videos for commercial intervals. Clicking this feature extracts the commercials to the media list.

Detection sensitivity allows you to control the rate of distinguishing between commercials.

Merge CF merges all your extracted clips so that they appear as one thumbnail in your media list.




Edit Subtitle

DVD MovieFactory automatically adds DV file information and DCS exif data as subtitles in your video. You can also import SRT and TXT files.

You can show/hide subtitles on the **Preview Window** by clicking .

Edit Subtitle lets you modify the format and duration of these subtitle texts. To edit a subtitle:

1. Select a video with subtitles in the **Media Clip** list.
2. Click **Edit Subtitle** .
3. The **Edit Subtitle** dialog box opens.
4. Use the various options to modify your subtitles. You can also use the **Preview Window** to check the alignment, format and color of your subtitles.
5. Click **OK** to apply your changes.



Add/Edit Chapters




Through this option, you can create submenus linked to their associated video clips. See “Creating Menus” for more details.

Represented as a video thumbnail in a submenu, each chapter is like a bookmark for a video clip. Viewers can easily select a chapter, then the video clip will immediately jump to the first scene of that chapter and start the playback.

This feature gives your viewers the freedom to choose a particular part of the movie to watch. Note that these small video thumbnails only link to its “mother” video without generating any additional physical video files. So, you don’t need to worry about the possibility of unexpected file size increase.

You can create up to 99 chapters for a video clip. If the Create menu option is not selected, you will be guided to the Preview step immediately without creating any menus after clicking **Next**.

To create or edit chapters linked to a video clip:

1. Select a video in the **Media Clip** list.
2. Click **Add/Edit Chapter** . The **Add/Edit Chapter** dialog box opens.
3. Click **Auto Add Chapters** . You can also drag the **Jog Slider** to move to a scene to use as the first frame of a chapter and click **Add Chapter** . Repeat this step until all chapter points have been added.
4. Click **OK**.

Use **Remove Chapter** or **Remove All Chapters** to delete unwanted chapters.

Tips:


- To use **Auto Add Chapters**, your video must be at least one minute long or have scene change information.
- If you click **Auto Add Chapters** and your video is a DV-formatted AVI file captured from a DV camcorder, DVD MovieFactory can automatically detect scene changes and add chapters accordingly.
- If the selected video is an MPEG-2 file with scene change information, DVD MovieFactory automatically detects each scene change and generates it as a chapter when you click **Auto Add Chapters**.



Export Selected Clips

This lets you select existing video files and save them to another video file format.

To export selected clips:

1. Select the video files from the **Media Clip** list in the **Select source and import (Step: 1/3)** page.
2. Click **Export selected clips**  and select from a list of file format templates. Select **HD-1440** to save your video in 1440 X 1080 resolution or select **HD-1920** to output in 1920 x 1080 resolution format. Select **Fast Export DVD Compliant Video** to save a DVD, VCD, or SVCD video. **Fast Export Video** lets you export a non MPEG video file to the same format without having to convert it. Select **Customize** to save to other formats.
3. Locate the folder where you want to save these files, and then enter a new file name.
4. Click **Save**.

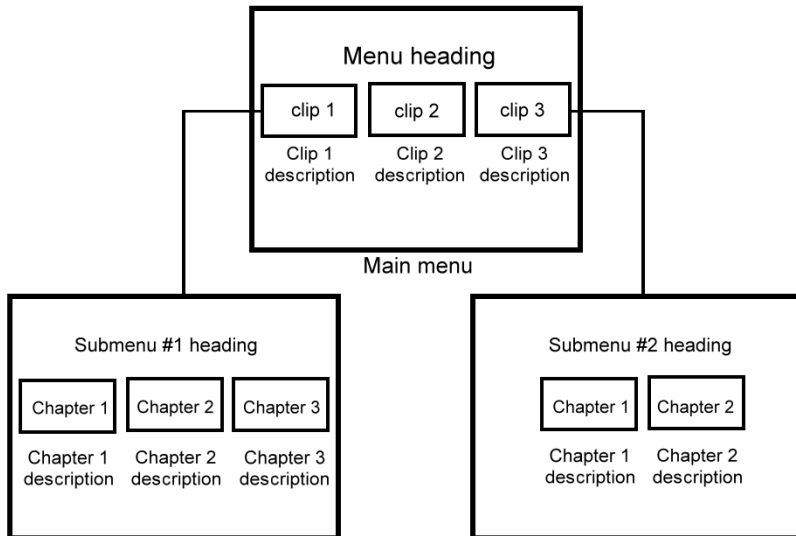
Note: You can also export more than one video clip. The file name you entered followed by a serial number will be used as file name for the succeeding clips that you export.

Creating Menus

To create menus and submenus, select **Create menu** in **Select Source and Import (Step: 1/3)**. Clicking **Next** takes you to **Select a template to create menu (Step 2/3)**.

Menus allow the viewers to instantly access specific portions of your video. DVD MovieFactory offers a set of menu templates to best fit the purpose of each menu. Custom-made menus are also easily created.

See the illustration below to better understand the menu structure.



In this example, Clip 1 has three chapters. When you click the Clip 1 video thumbnail, it will jump to submenu #1. If you look at Clip 2, it has no chapters assigned to it. Therefore, there is no submenu for Clip 2.

Menu template categories

Menu templates are located in the **Gallery** tab of the **Select a template to create menu (Step 2/3)** page. They are grouped in various categories depending on your project type.

SmartScene Menus uses both text and thumbnails. Hovering your mouse pointer over a chapter point text shows the thumbnail for that specific chapter. Selecting other text shows the corresponding chapter thumbnail.

Note: The **SmartScene Menus** type is not supported in **Straight Capture to Disc** projects.

The most commonly used menu type is **Thumbnail Menu**. The chapter points that you have previously created are represented as scene thumbnails. Clicking a thumbnail plays back the movie starting from the said chapter point.

Text Menu is a category that uses texts to represent chapter points. Selecting a text title plays back the movie from the corresponding chapter point.

When creating an HD DVD disc, additional menu categories are available:

HD DVD Standard provides standard DVD menu features but designed for high-definition pictures and sounds.

Pop-up menus are available when creating HD DVD Advanced content.

To create pop-up menus, select **Pop-up** in the **Gallery** tab in the **Select a template to create menu (Step:2/3)** page. Select the menu template to apply.

Pop-up menu templates are divided into 3 layers that you can select. You can edit objects in your currently selected layer.

Layer 1 - Background setting

Layer 2 - Title menu

Layer 3 - Chapter menu

You can modify background image, video, and music in Layer 1. Modifying text objects is allowed in all layers.

Applying menu templates

To apply a menu template for your project:

1. In the **Select a template to create menu (Step 2/3)** page, select the menu to modify in **Currently displayed menu**.
2. In the **Gallery** tab, select a template layout category.
3. Click a template layout thumbnail to apply it.

Editing menu templates

You can modify your menu template by selecting various options on the **Edit** tab.

- **Background music** Opens a menu of options for selecting or deleting audio files used as background for your menus.
- **Motion menu** Sets the duration for the moving elements in the menu. [See "Using motion menus" for more details.](#)
- **Background image/video** Opens a menu of options for selecting or deleting image or video files used as backgrounds for your menus. When you choose a video as menu background for your VCD or SVCD project, however, only the first frame of the video will be set as the menu background.
- **Font Settings** Opens a menu of options for font properties used in the menu template
- **Layout Settings** Opens a menu of options for applying changes to menu pages or resetting them to their previous state.
- **Advanced Settings** Opens a menu of options for adding title menus, chapter menus, and thumbnail numbers.
- **Customize** Opens the **Customize Menu** dialog box where you can modify the layout, thumbnail frames and navigation buttons of your menu.
- **Moving Path** Applies a predefined motion path is to menu objects such as titles, thumbnail buttons, and navigation buttons.
- **Menu In/Menu Out** Opens a selection filters and transition effects. If a menu template has a **Menu In** effect, its default duration is 20 seconds.

Note: The **Menu Out** transition effects are not supported in DVD+VR projects.

To switch to preview mode, click **Go to the Preview step**.

Using motion menus

When **Motion menu** is selected, the movie will use the beginning part of the video at a fixed duration instead of the first video frame as button thumbnails. The duration of motion menus range from 1 to 30 seconds.

Using motion menus will increase the file size. Check the disc space usage indicator to make sure that the file size is still within the limit of the DVD. Refer to the **Required menu space** to make sure the space for the menu does not exceed the menu space limit of your selected output.


Use video backgrounds and buttons to enhance the appearance of your menus. Select a customized template first then choose a video for your buttons or background.

Note: You can only create still menus for AVCHD and HD DVD Advanced projects. Creating motion menus is not supported.

Customizing menu templates

Ulead DVD MovieFactory allows you to customize and create your own menu templates for easy application to your current and future movie projects.

To create your own menu template:

1. Click **Customize**  in the Edit tab of the **Select a template to create menu (Step 2/3)** page to open the **Customize Menu** dialog box.
2. Select **Frame**, **Navigation Button**, or **Layout** in the drop down menu to display the associated preset thumbnails.
3. Double-click a thumbnail to apply it.
4. To choose a new background music, image, or video, click **Background music** or **Background image/video**.
5. You can rotate text in the **Preview Window** of the **Customize Menu** dialog box using the rotate handle. To modify the text description, select the text and click **Font Settings**. This opens the **Font** dialog box where you can select apply text attributes.

Note: When working in the **Customize Menu** dialog box, use the **Font** dialog box to accurately resize text. The **Font** dialog box can also be launched by right-clicking the text and selecting **Font Attributes**.

6. To set menu pan and zoom effects, click **Pan & Zoom**. Select the category and your desired effect.

7. To set menu motion filter effect, click **Motion Filter**. Select your desired motion effect.
8. To modify menu in/menu out effect, click **Menu In/Menu Out**.
9. To save the menu template for later use, click **Add to Menu Template**.
10. Click **OK**.

Note: To use your menu template, go to **Menu template** library at the **Select a template to create menu (Step 2/3)** page and select **Favorites** from the list. Double-click your menu template to apply it.

Use the **Preview Window** in **Select a template to create menu (Step 2/3)** to further manipulate and modify your menu objects. See "[Manipulating objects](#)" for more details.

Note: **Customize** is also not supported in AVCHD and HD DVD Advanced projects.

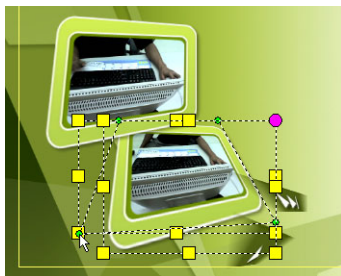
Manipulating objects

You can resize and rotate a menu placeholder by clicking it and dragging the handles. You can also move and align menu objects anywhere in the **Preview Window**.

To easily align objects in your menu, right-click the **Preview Window** and select **Show Grid Line**. You can use these grid lines as reference when dragging the menu objects to the desired position. Make sure that the objects are within the TV safe area (defined by a border with dotted lines). You can also restore the original layout of the menu pages by selecting **Reset this Page**.

Editing menu thumbnail and text style

After customizing your menu pages, you can edit your menu objects by double-clicking them in the **Preview Window**. Double-click a frame, button, or text object to modify it. You can also right-click on these objects and select various options.



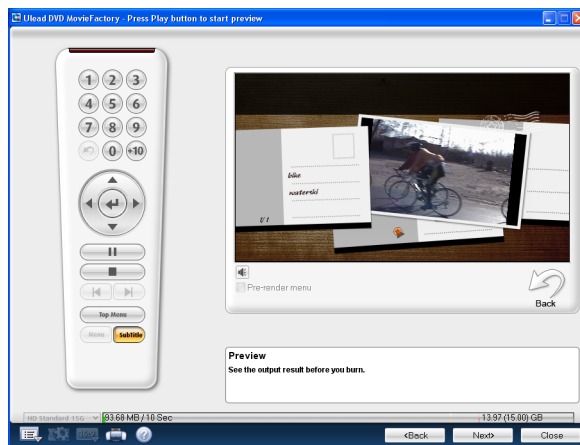
You can distort menu thumbnails and buttons by dragging their nodes.

Layout settings



You can then choose to apply the same settings to other menu pages in your project. To do this, click **Layout Settings** in the **Options Panel** and select **Apply to All Pages of this Menu**.

Preview

Now, it's time to view your video project and do a final check before you burn it onto a disc.



To preview your video project:



1. If you created menus for your project, click **Go to the preview step** in the **Select a template to create menu (Step 2/3)** page to go to the preview page (**Press Play button to start preview**). Otherwise, click **Next**.
2. Click **Play**  to watch your video project and test the menu selection on your computer. Use the navigation controls as you would use a standard remote control of a home DVD player.
3. Click **Volume control**  to adjust the audio volume of your computer as you preview your video project.
4. Click **Next** to proceed to the final step -- **Press Burn button to create a DVD (Step: 3/3)** and setup the output settings for your project and burn it onto a disc.

Tip: As you mouseover the controls, tooltips display their specific functions.

Burning your disc


This is the final step in the disc-authoring process. In **Press Burn button to create a DVD (Step: 3/3)**, specify the settings for burning your videos or creating disc image files.

To burn your project onto a DVD:

1. Specify the settings of your burning device in **Disc burner**.
 - **Label** Enter a volume name of up to 32 characters onto the CD/DVD/HD DVD.
 - **Drive** Select the disc burner that you want to use to burn the video file.
 - **Copies** Set the number of disc copies to burn.
 - **Disc type** Displays the output disc format for the current project.
2. Select your burning tasks and other output options. Click  /  to show/hide output options.
 - **Create to disc** Select to burn your video project onto a disc.

- **Create DVD/HD DVD folders** This option is only enabled when the video file being created is a DVD/HD DVD video. This allows the user to view the finished file on the computer using a DVD player software.
- **Create disc image** Select this option if you plan to burn the video file several times. By selecting this option, you don't have to generate the file again when you want to burn the same video file.
- **Normalize audio** Select to prevent irregular audio levels during playback of your movie. Different video clips may have different audio recording levels when created. When these video clips are put together, the volume could vary greatly from one to another. To make volume levels consistent between clips, **Normalize audio** function evaluates and adjusts the audio waveform of the whole project to assure a balance audio level throughout the video.
- **Archive images of slideshows** Select to include images used in your slideshows on the disc.
- **Power off the PC when completed** Select to automatically turn off your computer after the burning process.

Tip: Click **More settings for burning**  to define additional burner and output settings.

3. Click **Burn**  to start the burning process.
4. After successfully burning your disc, a dialog box appears from which you can select the next step.
 - **Return to Start page** allows you to save the current project and begin a new one.
 - **Continue** brings you back to the **Press Burn button to create a DVD (Step: 3/3)** page where you can burn another copy of your project or burn a new disc with a different series of settings.
 - **Close** prompts you to save your work and close DVD MovieFactory.



Required space

Use the following indicators as reference when burning your projects. These indicators help determine if you have sufficient space to successfully burn your project onto the disc.

- **Required/Available hard disk space** Displays the space needed by the working folder of the project and the space available for use in the hard drive.
- **Required/Available disc space** Displays the space needed to fit the video file in the disc and the space that is available for use.

Notes:

- Make sure your project does not exceed 4.37 gigabytes when burning onto a 4.7-Gigabyte DVD disc.
- If you will burn a DVD with nearly 2 hours of video, consider these options to optimize the project size: use a video data rate not higher than 4000 kbps, use MPEG audio, or use still image menus instead of motion menus.

Delete temporary files from folders  removes all unnecessary files in your working folder. **Erase**  deletes all the data in the rewritable disc.

The Burning Options dialog box

The various options in the **Burning Options** dialog box determine how your discs are burned.

- **Disc burner** Specify the settings for your burning device.
 - Drive** Select the disc burner to use in recording the video file.
 - Speed** Select the recording speed to use in burning the video file.
- **Files to include on disc** Choose additional items that you want to include on the disc.
 - Copyright information** Includes copyright text or information about the author.
 - Project file** Select to include the DVD MovieFactory project file that you created on the disc for later use.
 - Personal folder** Select to include any other folders on the disc.
- **Advanced settings** Lets you adjust more disc burning settings.
 - Test before burning** Select to simulate first (it does not actually burn yet) the CD/DVD/HD DVD burning of the video file. This will help you check if the system speed is enough to send data to the CD/DVD/HD DVD writing device at a specified recording speed. After the simulated burning, actual burning then starts. Clear to burn the disc without performing a test.

Buffer underrun protection Select to use this technology when burning your video file. This technology helps eliminate the buffer underrun problem. Availability of this technology depends on the disc burner you are using.

Restart DVD+RW background format Select to format the DVD+RW before recording. Enabling this option will prolong the recording process but will ensure a successful burn. This is recommended when you are using the DVD+RW disc for the first time.

Note: By default, this option is not selected to ensure maximum compatibility.

Do not close disc Select this function to create a multi-session disc for CD-R/CD-RW/DVD-R/DVD-RW/DVD+R.

Straight Capture to Disc

Straight Capture to Disc provides you with a fast way to capture videos from a video device (such as DV camcorder, VCR, or TV) through an analog or IEEE-1394 (FireWire) interface card, and then burn them directly onto a video disc. When this task is selected, DVD MovieFactory will initially check both your burner and disc to ensure that there are no problems with your output device and media. Then, you can set up your menu template as well as capture options and adjust other settings.


Notes:

- **Straight Capture to Disc** does not support 16:9 video.
- You cannot append titles in **Straight Capture to Disc**.

For DVD, VCD, or SVCD

With **Straight Capture to Disc**, you can capture your videos and directly burn them onto DVD, VCD, or SVCD.

To capture videos directly onto a disc:

1. Make sure your video source is switched on and properly connected to your computer.
2. Insert a disc into the disc burner where the video will be recorded, and then click **Video/Slideshow Disc** and select **Straight Capture to Disc** in the **Launcher**.
3. Select a recording format. The options vary depending on the selected output disc format.
4. Select the **Source** device to capture from.
5. Set the video length to record in **Duration** .
6. Click **Create Menu** to set up the menu for your video project.
7. Select the menu template and click **Background Image** or **Background Music** to add background image and music, then click **OK**.
8. Click **Create Chapter** to automatically add chapters with a specific time interval.
9. Select the desired output format in **Format**.
10. Click **Burner Options** to set the disc burner options and properties. See ["The Burning Options dialog box"](#) for more details.

11. Locate the starting point of your video to capture then click **Start Capture**. Click **Pause Capture** to pause the capturing process. Click **Stop Capture** to end the capturing process.
12. After successfully burning your disc, a dialog box appears from which you can select the next step.
 - **Return to Start page** returns to the launcher.
 - **Close** exits DVD MovieFactory.

Note: Click **Expand/Shrink preview window** to enlarge the **Preview Window** and minimize the other options in the **Straight Capture to Disc** dialog box. This gives a larger view of your video. Click **Expand/Shrink preview window** again to return to the default **Preview Window** size and layout. See "[Capture video](#)" for more details.

Settings and tools

The following tools located at the lower left of the main interface allow you to perform various tasks. See "[Tools](#)" for more details.



Settings and Options Allows you to set preferences, save projects, view the online Help, and access product specific information on the Ulead Web site.

Project Settings Opens a dialog box where you can configure project specific settings.


Display Aspect Ratio Toggles between standard 4:3 and widescreen 16:9 display aspect ratios for videos and menus.

Label@Once Launches the Label@Once dialog box where you can create and print labels and covers for your discs.

Help Opens the Ulead DVD MovieFactory online Help.

16:9 DVD

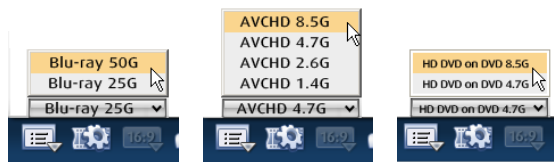
In addition to the standard 4:3 display, DVD MovieFactory supports 16:9 display aspect ratio for videos and menus. This lets you create widescreen videos and burn them onto a DVD disc.

To create widescreen videos, click  and select **16:9** from the **Display aspect ratio** list in the **Project Settings** dialog box. The video clips and menus are then adjusted automatically.

You can also switch between standard 4:3 and widescreen 16:9 by clicking **Display Aspect Ratio** and selecting the desired setting. See ["Display aspect ratio"](#) for more details.

Note: Switching between 16:9 and 4:3 display settings resets all menus to default.

You can change the output format of your current project anytime by selecting the desired output format in **Current project type**.



Audio Disc

Audio Disc allows you to select recording tasks, formats, and storage media using Ulead Burn.Now. You can compile audio files and create MP3, Audio CD, DVD-Audio, Music DVD-Video, and CD Extra discs.

You can burn files and projects to CDs, DVDs, and dual-layer DVDs. You can also perform multi-session burning of dual-layer DVD-R using Layer-Jump Recording technology. Burn.Now also supports the next-generation Blu-ray Discs (BDs) and HD DVDs.

Please refer to the **Burn.Now User Manual** for details.

Data Disc

Data Disc also allows you to select recording tasks, formats, and storage media using Ulead Burn.Now.

You can compile data files and create a standard data disc or encrypt your compiled data and create a password-protected data disc.

If you are using the ISO 9660 or ISO 9660 + Joliet file system, you can select **Bootable Disc** to create a disc that allows your computer to automatically boot or start up without having to access the hard disk.

Data Disc also allows you to create a DivX disc. DivX is a popular video codec.

You to store data both ISO and UDF file systems. Please refer to the **Burn.Now User Manual** for details.

Import/Capture

Ulead DVD MovieFactory is capable of capturing video from different video sources such as DV and HDV camcorders and VCRs, analog devices, and TV tuners.

Clicking **Import/Capture** in the **Launcher** and selecting **Capture from Devices** opens the **Capture Video** dialog box for you to immediately start capturing. See ["Capture video" for more details](#).

Clicking **Import from DVD** opens the **Select a DVD Title** dialog box for your to start importing DVD files or specific titles and chapters. See ["Import DVD video or DVD-VR files from a disc or hard drive"](#) for more details.

Edit/Append Disc

With DVD MovieFactory, you can modify videos and menus directly on a rewritable disc or add files and folders on an appendable disc. To edit a disc, click **Edit/Append Disc** in the **Launcher** and select the type of disc to modify. Click **Data Disc** or **MP3 Disc** to modify your CD, DVD, HD DVD, or Blu-ray disc in Burn.Now.

You can also modify the contents of your disc by clicking **Edit Disc** in the DVD MovieFactory host program.

To edit a disc in the host program:

1. Insert the disc to edit and click **Edit Disc**.
2. Select the project to edit and click **Next** to add, modify, or remove videos/menus.
3. Preview your video project, and then click **Next**.
4. Click **Burn**.

Notes:

- When editing a DVD movie recorded on DVD-R, the contents will first be copied to your hard drive. It will be burned onto a new disc after you have finished editing.
- You can only edit menus that were created in DVD MovieFactory.

Copy Disc

Copy Disc lets you copy contents from one disc to another. You can also burn a disc image file or the contents of a DVD folder directly to disc.

To copy contents directly from a disc:

1. Click **Copy Disc** in the **Launcher** and select **Burn DVD Folders to Disc**. This opens **Copy Utility**.
2. Specify the file to copy in **Source**. Select **Browse for a Movie Folder** if the source file is from a disc or a DVD folder.
3. In **Destination**, select the burner drive to use. You can also choose to convert the disc contents to a **Disc image file** for future use.
4. Click **More advanced settings** to specify burning options and then click **Copy**.

Disc Tools

Disc Tools allows you to format, erase, and close your disc.

Format Disc

Select **Format Disc** to open the **Format Disc** dialog box. DVD MovieFactory allows you to write the UDF (Universal Disc Format) file system to a rewritable disc to enable random packet writing. Random packet writing allows disc space to be used more efficiently when burning data onto the disc. It allows data to be written onto the disc in the same way as the hard disk, freeing disc space as data are deleted, and reusing freed space. A disc can be formatted with UDF 1.5 or above.

Erase Disc

Select **Erase Disc** to open the **Erase Disc** dialog box. This allows you to erase the contents of your rewritable disc.

Close Disc

Select **Close Disc** to open the **Close Disc** dialog box. Closing a recordable disc means that no further data can be written onto it.

Tools

Settings and options

Opens a menu of options that allows you to set preferences, save projects, view the online Help and information about Ulead DVD MovieFactory, visit the Ulead DVD MovieFactory Web page, and register your copy of Ulead DVD MovieFactory.

Open

Opens an existing Ulead DVD MovieFactory project file (*.DWZ).

Save

DVD MovieFactory (*.DWZ) file using the date as the file name. If you are just saving the changes you made in an existing project, its original file name will be retained.

Save As

Saves a copy of the current project.

Preferences

Select to set the program's working environment through the **Preferences** dialog box.

To open the **Preferences** dialog box, click **Settings and options** and select **Preferences** or press **[F6]**.

General

- **VCD player compliant** Select to make sure that the VCD created will play in stand-alone VCD players.
- **Anti-flicker filter** Select to apply the anti-flicker filter to the menu pages. The anti-flicker filter reduces the flickering that happens when using a television to view the menu pages. However, this does not help when the menu page is viewed on progressive scan devices such as computer monitors or projectors. Select this option if you plan to view the movie or slideshow on television sets.
- **Always show relink message** Select to automatically perform link-checking between the project clips and the associated source files. This is important when the source file is moved to another folder location or has been deleted.

- **Resume all confirmation dialog boxes** Select to have the confirmation boxes appear even after the “Do not show again” option is selected.
- **Max 30MB menus for set-top DVD+VR recorder** Select to set the maximum file size for DVD menus to 30MB to make DVD compatible with set-top DVD (DVD+VR) recorders.
- **Check Ulead Web site every XX days** Select to specify how frequently the program checks the Ulead Web site for news and updates.
- **Resample quality** Specify the quality for all clips. A higher quality results in better video but takes longer time to render. Choose **Best** if you are preparing for final output. Choose **Good** for faster operation.
- **TV system** Select the type of your TV system (NTSC or PAL/SECAM).
- **Slideshow image duration** Specify the default clip length for all image clips that will be used in your slideshow project. The duration is measured in seconds.
- **Video transition effect duration** Specify how long a video transition effect is displayed on screen.
- **Audio fade-in/out duration** Specify the amount of time it will take for the volume to reach normal levels when fading-in or the lowest level when fading-out.
- **Working folder** Enter or locate a folder for temporary files.

Advanced

- **Create index file for MPEG seeking performance** Improves real-time preview result using the **Jog Slider**. This option is specific for MPEG-1 and MPEG-2 files only.
- **NTSC/PAL safe color** Uses video friendly colors to ensure the display quality of your menus when viewed on any TV system. This helps you avoid the flickering problem on videos when viewed on screen.
- **TV safe area** Sets a margin (represented by a red border) in the **Preview Window** of the **Select a template to create menu (Step 2/3)** page. If you set the **TV safe area** at 10%, the remaining 90% will be your working area. Make sure that all your menu objects are within the working area so that they can be properly viewed on screen.

Capture

- **Click OK to start DV capture** Launches a confirmation message before performing the actual capturing process.
- **Stop tape once capturing stops** Automatically stops the connected capture device in your computer once the program stops capturing.
- **Captured image format** Select either JPEG or Bitmap format for the still image that you captured.
- **Image quality** Specifies the quality of the captured JPEG image.

Disc Template Manager

Opens the Disc Template Manager dialog box. Here, you can add disc templates according to the disc format selected. You can also edit or delete existing disc templates.

Ulead DVD MovieFactory Help

Opens the Ulead DVD MovieFactory online Help.

Product Updates on the Web

Opens the Ulead Web site to inform you about new updates & patches or product releases. This also gives you access to the latest offerings or promotions related to the product.

Online Registration

Launches your Web browser then takes you to the page on the Ulead Web site where you can register your copy of Ulead DVD MovieFactory.

About Ulead DVD MovieFactory

Displays product and copyright information about Ulead DVD MovieFactory.

Exit

Closes the program.

Project settings

Opens the **Project Settings** dialog box where you can view information about a specific project and customize its output settings.

- **MPEG properties for file conversion** Displays detailed information about the selected video's settings.
- **Change MPEG Settings** Select the type of video setting for your project. Select **Customize** to personalize video settings.
- **Display aspect ratio** Select the output display of your project. DVD MovieFactory supports standard 4:3 and widescreen 16:9 display aspect ratios for videos and menus.
- **Do not convert compliant MPEG files** Select to prevent the program from rendering DVD-compliant MPEG files during the rendering (output) process.
- **Support X-Disc** Includes Extended disc (XDVD, XVCD, XSVCD) compatible files to your project.
- **Two-pass conversion** Improves the quality of the output video by analyzing the video data first before encoding.
- **Treat MPEG audio as non-DVD compliant** Select to treat all video files that has MPEG audio as non-HD-DVD compliant. The MPEG audio track will not be rendered to LPCM during output.
- **Auto fade out first play to menu** Select to automatically crossfade from the first play clip to the menu.
- **Play all clips first before menu** Select to play all videos first, and then display the menu.
- **Auto repeat when disc playback ends** Select to automatically replay the video after disc playback ends.
- **Clip playback** Determines what to display next after the playback end of a video clip. Clear **Auto repeat when disc playback ends** to enable this item.

Note:


Following are the limitations of video data rate range for high definition video:

- HD DVD Advanced video must not exceed 29400 kbps.
- BDMV video must not exceed 60000 kbps.
- AVCHD video must not exceed 18000 kbps.

The minimum value of the range may change depending on frame size, and other variables.

Display aspect ratio

Toggles between standard 4:3 and widescreen 16:9 display aspect ratios for videos and menus.

You can also set display aspect ratio by clicking . This opens the **Project Settings** dialog box where you can select **16:9** in **Display aspect ratio**. The video clips and menus are then adjusted automatically.

Label@Once

Launches the **Label@Once** dialog box where you can create and print labels and covers for your discs. **Label@Once** allows you to design and print stunning discs labels and case covers for your discs. It lets you add and lay out images and text.

Label@Once dialog box

The **General** tab allows you to select a disc label or disc cover template to start with. You can then customize the overall design of the disc label, disc cover, insert, or booklet. The actual dimensions of your media or label in relation to the selected paper size is displayed to serve as your guide.

- **Printer** Select a printer to use.
- **Media type** Select the type of label to print. Choose from a variety of media types such as front and back CD covers, DVD case inserts and booklets, as well as mini disc labels.
- **Paper size** Select a paper template to work on or create your own customized template.
- **Paper orientation** Select whether to use **Portrait** or **Landscape** orientation for the paper.
- **Copies** Enter the number of copies to print.
- **Currently selected label** Displays a preview of the currently selected paper template.
- **Texture** Select to use an image file as background for your disc label. Click **Browse** to select the image file to use.
- **Color** Select to use a solid color as background for your disc label. Click the color box to select your desired color.
- **Transparency** Adjust the transparency of the background by entering a value or using the slider.

The **Image** tab allows you to adjust images in your disc label or cover design.

- **Brightness** A higher value produces a brighter image.
- **Contrast** A higher value makes the midtone colors stand out more.
- **Transparency** Adjust the transparency of the image by entering a value or using the slider.
- **Fit to Window** Click to fit the image to the disc label or cover layout. The image will be stretched proportionally and centered horizontally and vertically.
- **Shadow** Select to apply a shadow to the image.
- **Shadow color** Click to choose the desired image shadow color.
- **X-offset** Enter the horizontal distance of the shadow from the selected image.
- **Y-offset** Enter the vertical distance of the shadow from the selected image.
- **Transparency** Adjust the transparency of the shadow by entering a value or using the slider.

The **Text** tab allows you to add and format text.

- **Shadow** Select to apply a shadow to the text.
- **Shadow color** Click to choose the text color.
- **Wrap text** Select to wrap the text into a circle.
- **Auto fill** Click to fit the text to the disc label or cover layout. The text will be stretched proportionally and centered horizontally and vertically.

You can also choose the following tasks to help you with designing your disc label.

Files

- **Load Disc Label** Click to open a previously saved disc label project.
- **Save Disc Label** Click to save your disc label project.

Add Image Click to select an image to add on the label.

Add Text Adds a text object to the label.

Add Icon Adds an icon to the label.

Playlist Opens the **Add/Edit Playlist Information** dialog box to allow you to add information on the label such as the album title, artist name, as well as date.

Clear content Click to remove all objects and background from the disc layout. This is useful when starting over with your design.



Other options

- **Show/Hide Disc** Click to show/hide the outline of the disc for better alignment of images or text.
- **Show/Hide Grid** Click to show/hide gridlines for laying out images and text symmetrically.

Creating custom paper templates

DVD MovieFactory comes with preset paper templates that you can use as labels and covers for your discs. It also lets you create your own paper template.

To create a paper template:

1. Click  to open the **Label@Once** dialog box.
2. In the **General** tab, click  to open the **Customize Paper Template** dialog box.
3. Click **Add** to open the **Edit Paper Template** dialog box.
4. Enter a name for the template then set the unit of measurement in **Unit** and paper dimensions in **Paper size**.
5. To insert a disc label into the template, choose the disc size in **Shape object** and then click **Insert**. You can also insert CD and DVD covers by selecting a preset shape object from the list.
6. Click **Close** to go back to the **Customize Paper** dialog box.
7. To use the newly created template, select it in **Paper size**.

Designing from scratch

When creating a disc label, you can add and customize the look of your images and text.

To add a background image to the disc label:

1. Click the **General** tab.
2. Select **Texture** under **Background** and click **Browse** to locate the image file to be used as texture. Click **Open**. The image will be tiled on the label.

To use a solid color as the base of your disc label:

1. Click the **General** tab.
2. Select **Color** under **Background** and click the color box to select a color.

To add an image to your disc label:

1. Click **Add Image** to browse for the image to use. Click **Open** to add the selected image on the label.
2. Select the image in the **Preview Window** and use the handles to resize the image. To move an image, drag it to the desired position on the label.

Note: Only the part of the image inside the red boundary will appear when the label is printed.

3. To add more images, repeat steps 1 and 2.


To adjust the background:

1. Click the **General** tab.
2. To adjust the transparency of the background, use the **Transparency** slider to set the appropriate value.

To edit an image:

1. Select the image to edit.
2. Click the **Image** tab.
3. Adjust **Brightness**, **Contrast** and **Transparency** levels of the image by entering the value or using the slider.
4. Select **Shadow** to add a shadow to the selected image. Click the color box to set the shadow color, and adjust the X/Y offset values to set the shadow position.

To add text to your disc label:

1. Double-click the disc image in the **Preview Window** and enter your text or click . This automatically activates the **Text** tab.
2. Format the selected text by adjusting the font type, size, style, text color, and alignment. Adjust the text **Transparency** level accordingly.
3. Click a thumbnail under **Wrap text** to make the text wrap around the disc label. Select **Auto fill** if the text is too short to make a circle.
4. Select **Shadow** to add a shadow to the selected image, and click the color box to set the shadow color.
5. Adjust the X/Y offset values or use the shadow's round and green handles to set the shadow position.



Tips:

- Press **[Ctrl]** and click each element to select multiple elements.
- Right-click an element to open a pop-up menu that contains options for aligning elements, arranging their order, and more.

Designing based on an existing project

When your project has been completed and recorded onto a disc, it is time to create a disc label or cover.

To design a disc label based on an existing project:

1. Open an existing MovieFactory project and click .
2. Initially, the background image used for the menu will also serve as background for your disc label. The menu title serves as the disc title and the menu thumbnail descriptions are used as track names.
3. Click **Playlist**  as needed to open the **Add/Edit Playlist Information** dialog box. In **Global Information**, specify which information you want to include on the disc label such as the title, artist name, date created, and title or track names. To change a track/title name, double-click and enter a new text.

Note: Changing the disc title and track/title names in your label will not affect the menu title and thumbnail descriptions on your project.



4. You can also arrange the order or remove selected track/title names. Click **OK** to go back to the **Label@Once** dialog box.

5. Click **Print** to start the printing process or click **Files: Save Disc Label** to save your disc label project.

Designing based on a playlist

You can also design a label or cover for your discs based on a playlist. You can then use these as title or track names for your disc label.

To design a label based on a playlist:

1. Click . The disc label is displayed in the **Preview Window** of the **Label@Once** dialog box.
2. Click **Playlist**  to open the **Add/Edit Playlist Information** dialog box.
3. Click **Import Playlist** then browse for the playlist that you want to include on your label then click **Open**.

Importing a disc label

Open your previous disc label projects for re-editing or re-printing.

To open a previously saved disc label project:

1. Click **Files: Load Disc Label**.
2. Browse for the disc label file (*.UPL) to open in the **Open** dialog box.
3. Click **Open** to open the project.

Saving a disc label



After working on your disc label design, you can save it for use at a later time.

To save your disc label:

1. Click **Files: Save Disc Label**.
2. Browse for the folder where the disc label will be saved. Enter a name for the project and click **Save** to save the project.

Printing a disc label

To print your disc label:

1. In the **General** tab, select a printer from **Printer** list.
2. Enter the number of copies to print then click  or  to select the orientation of the paper.
3. Click **Print**.

Appendix: Important information

Installing a capture card

If your capture card is a PCI-based card, install the card on your computer by inserting it in an available PCI slot on the computer's motherboard.

Connecting a video camera to the computer

The type of capture card or interface port that you will need to connect your video camera to your computer depends on the type of video camera you have.

DV or Digital 8 camcorder

If you are using a DV (Digital Video) or Digital 8 camcorder, you will need an IEEE-1394 interface on your computer. Some newer computers already have built-in IEEE-1394 ports. If you do not have them on your computer, install an IEEE-1394 card.

Connecting the camcorder to the IEEE-1394 interface

Use an IEEE-1394 cable to connect your digital camcorder to the IEEE-1394 port. Before purchasing one, check first the pin connectors used on your camcorder and your computer. Most DV and Digital 8 camcorders have a 4-pin connector, whereas desktop computers that come with IEEE-1394 ports or installed with IEEE-1394 cards usually have 6-pin connectors. The IEEE-1394 cable that is required for desktop computers is a 4-pin to 6-pin cable. Most notebook computers have 4-pin connectors which require a 4-pin to 4-pin cable.

Checking the hardware setup

After connecting your digital camcorder to the computer, check if the device is detected by your Windows system. If you installed an IEEE-1394 card on your computer, check also if the card is detected.

To check if the IEEE-1394 card and digital camcorder are detected:

1. Insert your video tape into the camcorder and switch it on. Make sure it is in playback mode (usually named VTR or VCR). Check your camcorder's manual for specific instructions.
2. Open the **Control Panel**, then open **System: Hardware - Device Manager**. Make sure the following device names are listed in the **Device Manager**.

Under Windows XP and Vista:

- 1394 Bus Controller
- <Brand name> DV Camcorder (The brand name depends on the DV camcorder connected to the IEEE-1394 interface.)

3. If your digital camcorder has been detected properly, it will be listed as a source device. In DVD MovieFactory, click **Capture video** in **Select source and import (Step 1/3)**. In the **Capture Video** dialog box, check if your camcorder is displayed in **Source**.

HDV camcorder

If you have connected your HDV camcorder before to your computer, check the **Device Manager** to see if your camcorder is detected as a DV device or AV/C tape device. If the camcorder is detected as an AV/C tape device, you can capture HDV footage.

Analog video sources

VHS, S-VHS, Video-8, and Hi8 camcorders and VCRs are examples of analog video sources. To capture video from analog sources, you will need to install an analog capture card in your computer. Conventional broadcast television is also an analog source. To capture TV footage, you need to have a TV tuner card installed in your computer.

Connecting the video device to the analog capture card

To connect your video device to the analog capture card, use either an S-Video or RCA Composite cable depending on your device's video output. If your video device has both types of output, use the S-Video connection for higher video quality captures.

If you want to use the Composite output of your video device, connect the yellow plugs of the Composite cable to the video output of your video device and the video input port of the analog capture card.

Most higher-end analog capture cards do not have the Composite/S-Video input ports crowded on the side of the cards. Instead, these cards come with an external breakout box that provide all the video input ports at the front of the box. Video devices can be connected to the capture card more easily through the breakout box.

Connecting a TV antenna to the tuner card

A tuner card has a TV antenna input just like the regular television monitor. Plug your TV antenna to the TV connector of the tuner card.

Connecting the capture or tuner card to the sound card

Most capture and tuner cards only allow video capture. To preview the audio from your video device or TV and to capture the audio into your computer, you need to connect the audio output of the capture or tuner card to the sound card's Line In port. The required cables for connecting to the sound card are different for each type of video source.

Checking the hardware setup

After connecting your analog source to the capture or tuner card, check if the card is detected by your Windows system.

To check if the capture or tuner card is detected:

1. If you are using a video device such as a camcorder as your source, insert your videotape into the video device and switch it on. Make sure it is in the playback mode (usually named VTR or VCR).
2. Open the **Control Panel**, then open **System: Hardware - Device Manager**.
3. In the **Device Manager**, double-click **Sound, video and game controllers**. Check if your capture or tuner card is listed in this folder.
4. If your capture or tuner card has been detected properly, it will be listed as a source device in DVD MovieFactory. Select the **Capture Step** and check if your capture or tuner card is displayed under the **Source** list in the **Options Panel**.

Glossary

Analog

A signal that continuously varies in frequency/quantity, rather than discrete units found in digital devices. Information from an analog source must be converted to digital in order for a computer to interpret it.

Aspect Ratio

The proportion of a picture's width and height.

Blu-ray

Also known as BD (Blu-ray Disc), this next-generation optical disc format features recording and playback of high-definition video (HD). On a single layer, it can hold 25GB of HD content. Its dual-layer version can hold up to 50GB.

Burn

The process of writing or recording content to a CD or DVD.

Button

An object assigned to an attribute which, when clicked, performs a specific function. Buttons are commonly used to play an assigned chapter or move to the next or previous one.

Compression

The process of making a file smaller. Nearly all digital video is compressed in some way or another through a codec.

Device Control

A software driver that allows your computer to control video sources like the camcorder.

DV

Abbreviation for Digital Video, which is a very specific format of video. DV can be played back/recorded by your computer if you have the proper hardware (capture card) and software (DV codec).

Disc image files

Files that contain the entire content of a storage medium (e.g. CD-ROM).

Dolby Digital audio

An audio compression format developed by Dolby Lab for multiple audio channels.

Field order

The order in which a field in interlaced video is displayed first during playback. This can either be Lower Field First or Upper Field First. A field is one of the two half-frames in interlaced video. Field order is not

applicable for frame-based videos which are displayed with complete single frame pictures.

HD DVD

Developed as a standard for high-definition DVD, HD DVD is similar to the Blu-ray Disc, which uses a 120 mm diameter optical data storage media and 405 nm wavelength blue laser.

HDV

Abbreviation for High Definition Video. It is the video recording format that allows for high data compression, and in turn allows for higher picture resolutions. HDV can go up to 1920 x 1080 in resolution.

Introductory Video

The video clip that plays when the disc is inserted into the player.

LPCM audio

Abbreviation for Linear PCM which is a high quality uncompressed audio format similar to CD audio, but with higher sampling frequencies and quantization. Bandwidth for video on a DVD video disc is lessened if LPCM audio is used.

Menu

A group of objects set against a background that allows navigation through the scenes or immediately proceed to a specific portion of the title.

Motion Menu

A menu that features animated backgrounds and/or buttons.

MPEG audio

A family of standards for low bit-rate coding of audio.

Normalize audio

This function evaluates and adjusts the audio waveform of video used in a movie according to the highest peaks and correcting the rest accordingly to avoid volume level variation.

NTSC

NTSC is the video standard in North America, Japan, and some other regions. Its frame rate is 29.97 fps and has a video resolution of 720x480 pixels.

PAL

PAL is the common video standard in Europe, Australia, New Zealand, China, Thailand, and other Asian countries. It has a frame rate of 25 fps, and has a video resolution of 720x576 pixels.

Split by Scene

A command for captured DV AVI files in the Library. This automatically splits a single video file into multiple clips based on the changes in recording date and time.

Index

A

- Add Chapters 31
- Add photo slideshow 19
- Adding video files 18
- Ad-Zapper 30
- Anti-flicker filter 49
- Audio fade-in/out duration 50
- AVCHD 12

B

- Blu-ray 12, 62
- Buffer underrun protection 42

C

- Capturing analog video 16
- Capturing still images 17
- Capturing TV footage 16
- Create audio disc 46
- Create data disc 46
- Creating Menus 33

D

- Detection sensitivity 30
- Direct to MPEG capture 17
- Disc Template Manager 51

E

- Edit Chapters 31
- Edit Room 24
- Editing a slideshow 28
- Editing menu thumbnail 38
- Enhancing your video 24
- export selected clips 32

H

- HD DVD 12
- HD DVD Advanced 12

I

- Image quality 51

J

- Joining/Separating videos 28

L

- Label@Once 53
- launcher 8
- Layout settings 38

M

- Manipulating objects 37
- Media Clip Properties 23
- Menus 34
 - SmartScene 34
 - Text 34
 - Thumbnail 34
- Merge CF 30
- Multi-trimming a video 29

N

- NTSC/PAL safe color 50

P

- Preferences 49
- Preview 38
- Project Settings 52

R

- Resample quality 50

S

- Settings and options 49
- Slideshow image duration 50
- Straight Capture to Disc 43
- Straight to Disc
 - For DVD, VCD, or SVCD 43

T

- The right-click menu 23
- Transition effect duration 50
- TV safe area 50
- TV system 50
- Two-pass conversion 52

V

- VCD player compliant 49