

# Ulead QuickDrop

*User Guide  
InterVideo Digital Technology Corporation  
January 2007*

## **Ulead QuickDrop version 2.0**

Copyright © 2007 InterVideo Digital Technology Corporation. All rights reserved. No part of this publication may be reproduced or transmitted in any form or by any means, electronic or mechanical, including photocopying, recording or storing in a retrieval system, or translated into any language in any form without the express written permission of Corel Corporation.

### **Software license**

The software described in this document is furnished under a License Agreement which is included with the product. This Agreement specifies the permitted and prohibited uses of the product.

### **Licenses and trademarks**

ICI Library © 1991 - 1992 C-Cube Microsystems.

Copyright © 2007 InterVideo Digital Technology Corporation. All Rights Reserved. Corel, the Corel logo, Ulead, the Ulead logo, Ulead DVD MovieFactory, InterVideo, the InterVideo logo, WinDVD and InterVideo DVDCopy are trademarks or registered trademarks of Corel Corporation and/or its subsidiaries.

Intel, the Intel logo, Core 2 Duo and the Core 2 Duo logo are trademarks or registered trademarks of Intel Corporation or its subsidiaries in the United States and other countries. Microsoft, Windows, Vista, and other Microsoft products referenced here in are either trademarks or registered trademarks of Microsoft Corporation in the United States and/or other countries. Apple, QuickTime and the QuickTime logo are trademarks of Apple Computer, Inc., registered in the United States and other countries. QuickTime and the QuickTime logo are trademarks used under license. Adobe, the Adobe logo, Acrobat, the Acrobat logo are Trademarks of Adobe Systems Incorporated. Macromedia, Flash and Macromedia Flash are trademarks or registered trademarks of Macromedia, Inc. in the United States and internationally. Avery is a trademark of Avery Dennison Corporation. Manufactured under license from Dolby Laboratories. Dolby and Double-D symbol are trademarks of Dolby Laboratories. Blu-ray Disc and Blu-ray Disc Logo are trademarks and/or registered trademarks licensed by Sony Corporation on behalf of Blu-ray Disc Association (BDA). LabelFlash and the LabelFlash logo are trademarks and/or registered trademarks of the Yamaha Corporation. DivX is a registered trademark of DivX, Inc. "AVCHD" and "AVCHD" logo are trademarks of Matsushita Electric Industrial Co., Ltd. and Sony Corporation. All other product names and any registered and unregistered trademarks mentioned are used for identification purpose only and remain the exclusive property of their respective owners.

Protected by U.S. Patent 6,121,976; Taiwan Patents 079758 and 147957.

### **Template files**

Files provided as samples on the program CD can be used for personal demonstrations, productions and presentations. No rights are granted for commercial reproduction or redistribution of any sample files.

### **North & South America**

<http://www.ulead.com>

**Support:** <http://www.ulead.com/tech>

### **Germany**

<http://www.ulead.de>

**Support:** <http://www.ulead.de/tech>

### **United Kingdom**

<http://www.ulead.co.uk>

**Support:** <http://www.ulead.co.uk/tech>

### **France**

<http://www.ulead.fr>

**Support:** <http://www.ulead.fr/tech>

### **International**

<http://www.ulead.com>

<http://www.ulead.com.tw>

### **Support:**

<http://www.ulead.com/tech>

<http://www.ulead.com.tw/tech>

### **Japan**

<http://www.ulead.co.jp>

**Support:** <http://www.ulead.co.jp/support>

### **China**

<http://www.ulead.com.cn>

**Support:** <http://www.ulead.com.cn/tech>

# Table of Contents

<b>Welcome to Ulead QuickDrop</b> .....	<b>4</b>
Running QuickDrop .....	4
Introduction to the workspace .....	4
The File List Panel .....	6
Add files and folders .....	6
Preview files .....	6
Burn disc .....	7
Copy disc .....	7
Erase disc .....	7
Disc Information .....	7
Preferences .....	8
Right-click menu .....	8
<b>Index</b> .....	<b>9</b>

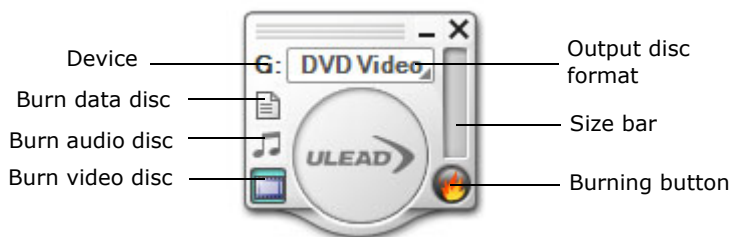
# Welcome to Ulead QuickDrop

**QuickDrop** provides a simple solution to directly burn a variety of discs as well as play and edit media. Drag and drop files and folders to the interface or click a task button to directly perform a task. Thus, you can save time and effort for a more productive digital life with your computer.

## Running QuickDrop


- Click the QuickDrop icon on your **Start** menu.
- Run QuickDrop from the program folder.
- QuickDrop automatically opens during Windows startup. (You can change this by clearing **Auto load when Windows starts** in **Preferences**.)

## Introduction to the workspace



The main interface is where you drag and drop files and/or folders to burn. For **Data**, **Audio**, and **Video** tasks, the **Burn** button is enabled only when you have dropped at least one file or folder onto a task. The **Size bar** shows the size of the files for burning.

**G: Device** displays the drive letter of the burning device installed and connected to the computer.

 **Burn Data disc** forces output as data disc. Creating a data disc with UDF 1.5 format allows you to cover a file size over 4GB.



**Burn Audio disc** forces output as music disc such as audio CD, MP3 CD, and MP3 DVD.

**Notes:**

- When burning MP3 disc, all kinds of files can be dropped to the interface, but only MP3 files will be burned.
- When burning Audio disc, audio files less than 5 seconds in length can be added. However, burning is not allowed if total length is less than 5 seconds.



**Burn Video disc** forces output as video or slideshow disc. Dragging several folders with photos inside automatically creates clips.

Double-click to open the associated **File List Panel** to edit the content of the disc to be burned. Here, you can add and delete files and folders, preview video files, and rotate images.



**Burn** button starts the burning process.

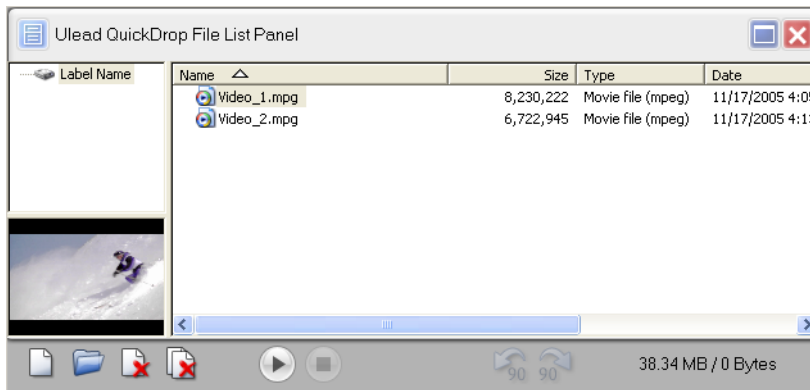
Right-click to select a menu command.

While burning a video disc and Audio CD using a rewritable disc, all previous contents on the rewritable disc are removed.

Once burning is done, the disc ejects automatically.



## The File List Panel

This is where you add and play back various media such as video, image, and music files.



## Add files and folders

There are 3 ways to add files and folders to the **File List Panel**:

- Drag and drop files or folders from Windows Explorer to the **File List Panel**
- Click  **Add files** or  **Add folder**
- Right-click the **File List Panel** and select **Add Files** or **Add Folder**

## Preview files

You can view selected image or video files in the **Preview Panel**.



Use the control buttons to view image files and play video. Rotate selected image files by selecting **Rotate left** or **Rotate right**.

## Burn disc

Drag and drop video or image files or folders to the main interface or **File List**

**Panel** and click  **Burn** to start burning.

## Copy disc

Perform disc-to-disc copy if you have a writable disc in the disc burner. Right-click the main window and select **Copy Disc**.

## Erase disc

To erase contents on a rewritable disc, right-click main window and select **Erase RW Disc**.



## Disc Information

This shows general disc information such as disc capacity and disc type. To view the **Disc Information** dialog box, right-click the main window and select **Disc Info**.

## Preferences


This provides setup options for the program's working environment, and are categorized by 3 tabs: **General**, **Video Output** and **Slideshow**.

In the **Slideshow** tab, you can set photo duration, apply pan & zoom and transition effects, add and delete background music, as well as rearrange the order of the audio clips.

## Right-click menu

There is the right-click menu for extra functions and settings.

- **Copy Disc** Opens the **Copy Disc** dialog box to perform disc-to-disc copy.
- **Erase RW Disc** Choose from two options to erase the content on a rewritable disc.
- **Disc Info** Show the disc information such as capacity and disc type.
- **Eject/Load Disc** Open the disc tray of a disc burner.
- **Always on Top** Keeps the QuickDrop interface on top of all other windows on the desktop.
- **File List Panel** Launches the **File List Panel** box.
- **Empty File List** Remove existing files from File List Panel.
- **Menu Settings** Opens the **Menu Settings** dialog box that allows you to create menus for your DVD-Video.
- **Preferences** Determine program settings.
- **Ulead QuickDrop Help** Opens the online help file for more information and instructions on QuickDrop.
- **Product Updates on the Web** Directs to the Ulead website for product updates.
- **Online Registration** Directs to the Ulead website for registration.
- **Exit** Closes QuickDrop.

In addition, you can right-click the QuickDrop icon  on the Windows taskbar to access **Preferences**.



# Index

## A

Add files and folders 6  
Always on Top 8  
audio CD 5  
Audio disc 5

## B

Burn button 5  
Burn data disc 4  
Burn disc 7

## C

Copy disc 7

## D

Device 4  
Disc Info 7, 8

## E

Eject Disc 8  
Erase disc 7  
Erase RW Disc 7, 8  
exit 8

## F

File List Panel 6  
File size bar 4

## M

MP3 CD 5  
MP3 DVD 5

## P

Preferences 8  
Preview files 6

Product Updates 8

## R

Right-click menu 8

## V

Video disc 5

## W

workspace 4