

CD & DVD

PictureShow[®] 4

*User Guide
Ulead Systems, Inc.
May 2005*

English edition for Ulead CD & DVD PictureShow 4, May 2005.

© 1992-2005 Ulead Systems, Inc.

All rights reserved. No part of this publication may be reproduced or transmitted in any form or by any means, electronic or mechanical, including photocopying, recording or storing in a retrieval system, or translated into any language in any form without the express written permission of Ulead Systems, Inc.

Software license

The software described in this document is furnished under a License Agreement, which is included with the product. This Agreement specifies the permitted and prohibited uses of the product.

Licenses and trademarks

ICI Library © 1991– 2004 C-Cube Microsystems.

All rights reserved. Ulead and the Ulead Systems logo are registered trademarks and Ulead CD & DVD PictureShow is a trademark of Ulead Systems, Inc. Intel, Pentium and MMX are registered trademarks and/or trademarks of Intel Corporation. Microsoft, Windows, DirectX and/or other Microsoft products referenced herein are either trademarks or registered trademarks of Microsoft Corporation. Adobe, the Adobe logo, and Acrobat are trademarks of Adobe Systems Incorporated.

All other product names and any registered and unregistered trademarks mentioned in this manual are used for identification purposes only and remain the exclusive property of their respective owners.

Sample files

Files provided as samples on the program CD can be used for personal demonstrations, productions and presentations. No rights are granted for commercial reproduction or redistribution of any sample files.

North & South America

Ulead Systems Inc.

<http://www.ulead.com>

Support: <http://www.ulead.com/tech>

Japan

Ulead Systems Inc.

<http://www.ulead.co.jp>

Support: <http://www.ulead.co.jp/tech>

Germany

Ulead Systems GmbH

<http://www.ulead.de>

Support: <http://www.ulead.de/tech>

United Kingdom

<http://www.ulead.co.uk>

Support: <http://www.ulead.co.uk/tech>

International

Ulead Systems, Inc.

<http://www.ulead.com>

<http://www.asiapac.ulead.com>

<http://www.ulead.com.tw>

Support:

<http://www.ulead.com/tech>

<http://www.asiapac.ulead.com/tech>

<http://www.ulead.com.tw/tech>

China

Ulead Systems, Inc.

<http://www.ulead.com.cn>

Support: <http://www.ulead.com.cn/tech>

France

<http://www.ulead.fr>

Support: <http://www.ulead.fr/tech>

Welcome to Ulead CD & DVD PictureShow .6

Getting Started6

CD & DVD PictureShow at a glance	6
<i>ORGANIZE</i>	6
<i>THEME</i>	7
<i>BURN</i>	7
Understanding your project elements	7
<i>Slideshow album, slideshows, and slides</i>	7
<i>Theme</i>	8
Setting your preferences	8
Starting a project	9
Relinking missing files	9

Understanding the workspace10

The Organize tab	10
<i>The Slideshow Toolbar</i>	10
<i>The Slideshow List</i>	11
<i>The Slide Toolbar</i>	11
<i>The Slide Panel</i>	11
<i>Output Format Selection Menu and Capacity Bar</i>	12
The Theme tab	12
<i>The Control Panel</i>	12
The Burn tab	14

Organize15

Creating a slideshow	15
<i>Creating a photo slideshow</i>	15
<i>Creating a video slideshow</i>	16
<i>Getting photos and videos from a digital camera</i>	16
<i>Using Batch Collect</i>	17
Modifying your slideshow contents	18
<i>Changing a slideshow's title text and thumbnail</i>	18
<i>Adding images to your slideshow</i>	19
<i>Arranging slides inside a slideshow</i>	20
<i>Splitting a Slideshow</i>	20
<i>ExpressFix</i>	21
<i>Decorating your photos</i>	23
<i>Adding descriptions</i>	23
<i>Multi-trim Video</i>	24
Using Display Reminder	26

Playing back a slideshow	26
Saving a photo as a separate file	27
Theme	28
Applying a theme to your slideshow album	28
Customizing menus	29
<i>Modifying onscreen text</i>	<i>29</i>
<i>Modifying background music</i>	<i>30</i>
<i>Specifying a menu background image</i>	<i>30</i>
<i>Motion Menu on DVD slideshows</i>	<i>31</i>
<i>Using Pan & Zoom and Motion filter to your menu</i>	<i>31</i>
<i>Using a video as a menu background</i>	<i>32</i>
Customizing your slideshows	32
Adding and editing background audio	34
Deleting an audio clip	34
Rearranging the order of the audio clips	35
Trimming an audio clip	35
Adding sound annotation to slideshows	36
Applying a frame	36
Applying a transition effect to your slideshow	37
Applying Pan & Zoom to your slideshows	37
Using Audio & Effect	38
Customizing background and description	43
Adding a First Play Video	43
Previewing your slideshow album	44
Saving the slideshow as a separate video file	45
Burn	46
Burning your project to disc	46
Creating a disc image file or DVD folder	47
Printing CD index and CD label	48
Printing CD label	48
Printing CD index	49
Appendices	51
Appendix A: Organize	51
<i>Slideshow Toolbar</i>	<i>51</i>
<i>Slide Toolbar</i>	<i>51</i>
Appendix B: Dialog Boxes	52
Add Description	52

<i>Audio & Effect</i>	53
<i>Add Photos</i>	54
<i>Audio Recorder</i>	55
<i>Decorate</i>	55
<i>Get from Digital Camera</i>	55
<i>Text & Background</i>	56
<i>Preferences</i>	57
<i>Print CD Index</i>	58
<i>Print CD Label</i>	60
<i>Output Options</i>	62
<i>Relink</i>	63
<i>TWAIN</i>	64
<i>WIA</i>	64
Appendix C: Remote Control	65

Index	66
--------------------	-----------

Welcome to Ulead CD & DVD PictureShow

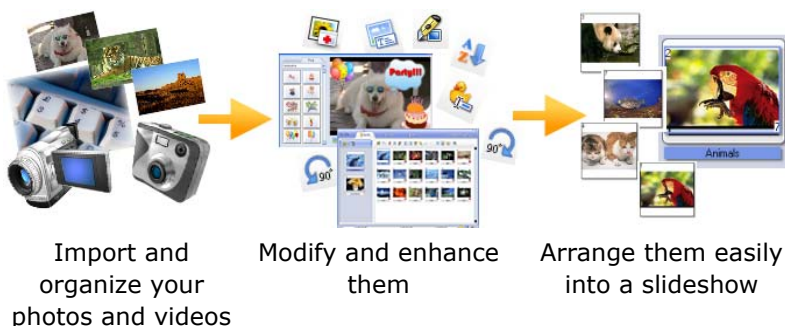
Ulead® CD & DVD PictureShow 4 makes it easy to create entertaining photo album slideshows suitable for any occasion. Turn your photos into dynamic slideshows complete with music, transitions, captions, narration and eye-catching effects in just three steps. Over 60 Instant-Show™ theme templates in categories such as Family, Holidays and Vacation combine meaningful themes with rich special effects for stunning results. Dramatic pan and zoom motion effects and transitions guarantee your slideshows look like they were made by a pro! You can even correct problem photos with ExpressFix™, the built-in photo editor. It's easy to produce outstanding slideshows every time.

Getting Started

CD & DVD PictureShow at a glance

Creating projects in CD & DVD PictureShow involves a three-step process where you can **Organize** your photos into a slideshow album, apply a creative **Theme** to it, and then **Burn** it onto a CD or DVD. The process is illustrated below:

ORGANIZE



THEME



Apply a great looking theme to your slideshow album with a few mouse clicks

Customize your chosen theme to suit your moods by designing your own menu or customizing each slideshow

Watch your project come to life with a fully functional preview

BURN



Specify your disc burner and recording settings

Specify files, such as photo, video, or project files, to include on disc

Burn your projects to CD or DVD and share them with family and friends

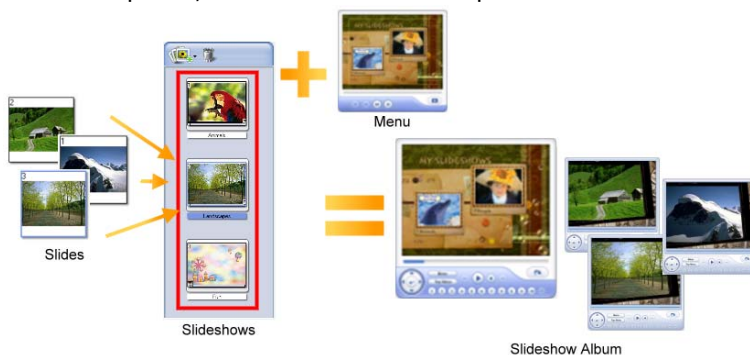
Understanding your project elements

In order to build a properly organized slideshow, it is important to understand the basic elements of a project and how each of them is related.

Slideshow album, slideshows, and slides

A **slideshow album** is composed of the photo and video slideshows as well as your project menu. A **slideshow** is made up

of either a collection of your photos or a single video file. A **slide** includes the photo, its decorations and captions.



Theme

CD & DVD PictureShow untangles the complexity of designing your slideshow album through its **Theme** feature. A theme determines the overall appearance of your slideshow album by applying corresponding slideshow and menu elements. These elements include visual styles, motion effects, and background music.



Setting your preferences

Before creating your project, you must first specify the working folder and the TV system that your project will use. Select **File: Preferences** or press **[F6]** to open the **Preferences** dialog box. Click the **General** tab, and then specify the location, where your

project temporary files will be stored, in **Working folder**. Specify also the **TV system** that your project will use in the **Output Settings** tab. (See "Preferences" on page 57).

Starting a project

When you run CD & DVD PictureShow, it automatically opens a new project and lets you start creating a slideshow. A new project always uses CD & DVD PictureShow's default project settings. To see and modify these settings based on your preferences, select **File: Preferences**.

You must also specify the output format before creating your slideshow album. To do this, select the output format in the **Output Format Selection Menu**.

Always save your project for future editing by selecting **File: Save**.

To open an existing project, select **File: Open**.

Relinking missing files

When the source files of your slideshows are moved from their original locations, their links to the program are broken. When this happens, the affected slides will be replaced with a warning image during playback or when working in the Theme tab. To address this, you must relink the new location of the missing files to the program.



To relink a file:

1. Select **File: Relink**. Missing files are displayed in the **Relink** dialog box. You can manually find the missing file, and then click **Apply** to relink the new path to the program.
2. You can also use **Smart Search** to find the missing file(s) quickly. Click **Smart Search** to open the **Search Folder** dialog

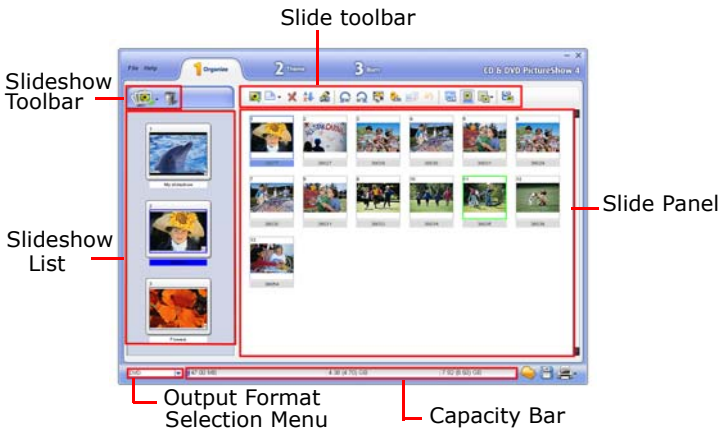
box. Select the directories where the program will perform the search. Click **OK**.

3. CD & DVD PictureShow automatically locates the missing files and displays the searched paths under **Search results**. Click **Apply** to link the new image path(s) to the program.

Understanding the workspace

The user interface of CD & DVD PictureShow allows you to work with ease in making your slideshow album. It provides a three-step workflow where you can easily organize photos, select a theme, and then burn your project to a disc.

The Organize tab



The Slideshow Toolbar

The **Slideshow Toolbar** provides two options: to create a slideshow or delete an existing one. There are several ways to create a slideshow. You can manually import photos or videos from local drive or get them from a digital camera. You can also use the Batch Collect feature for a faster way of creating slideshows. (See [“Slideshow Toolbar” on page 51](#)).

The Slideshow List

The **Slideshow List** displays thumbnails of all created slideshows. A slideshow can be a set of images or a single video. Click a slideshow thumbnail to display included images in the **Slide Panel**. Right-clicking a photo or a video slideshow displays corresponding context menu for quick access to some commands.



The Slide Toolbar

The **Slide Toolbar** provides different tools that you can use to modify the slides within your slideshow. It lets you customize the slides by fixing common digital photo problems, breaking down video clips into multiple segments, saving photo within a slideshow and much more. (See "Slide Toolbar" on page 51).



The Slide Panel

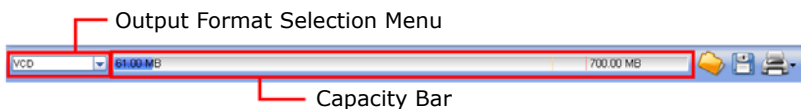
The **Slide Panel** displays the slides included in the selected slideshow.



Right-clicking the **Slide Panel** displays corresponding context menu to give you access to some options not available in the user interface.

Output Format Selection Menu and Capacity Bar

Select the disc output format of your project using the **Output Format Selection Menu**. The **Capacity Bar**, on the other hand, shows the current recording capacity on the output disc. It also displays the used space on the disc.



The Theme tab



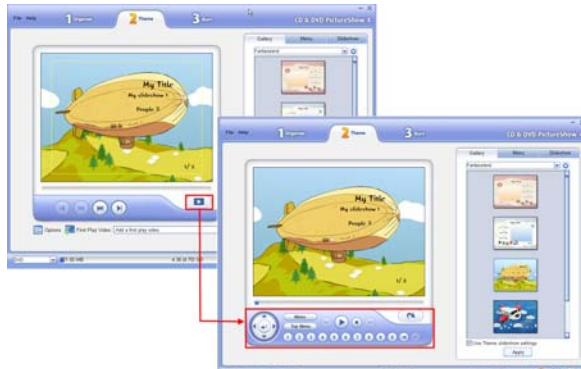
The Control Panel

The **Control Panel** comprises three tabs. Use the **Gallery** tab to apply a theme template to your slideshow album. To customize an applied theme, use the **Menu** and **Slideshow** tabs.

Gallery tab

Select a theme in the **Control Panel** to apply predefined styles to your slideshow album. Use the navigation controls in the **Preview Panel** to browse menu pages. To preview the applied theme, click **Preview** in the **Preview Panel**. The navigation control switches to the **Remote Control** to simulate the controls in a CD or DVD

Player. After selecting a theme, you can go directly to **Burn** tab to record your project to disc.



Menu tab

You can customize the settings of your project menu in the **Menu** tab. You can change the audio and image background, or assign a video to make it a motion menu.

To restore the menu default settings, click **Reset** in the **Control Panel**. (See “Customizing menus” on page 29).



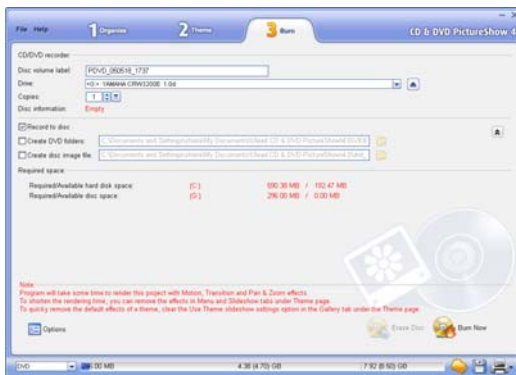
Slideshow tab

When you switch to the **Slideshow** tab in the **Control Panel**, the **Preview Panel** displays navigation controls that allow you to preview the selected slideshow. Click **Browse** to select other slideshows included in your project. You can also customize the

slideshow settings of the applied theme in this tab. (See “Customizing your slideshows” on page 32).



The Burn tab



The Burn tab provides you different options in recording your project to a CD or DVD. (See “Burn” on page 46).

Organize

Begin creating your project in the Organize tab. Here, you can set up the framework of your project by putting together images prior to applying a theme.

Creating a slideshow

In CD & DVD PictureShow, you can easily create an image or video slideshow using its four simple methods.

To create a slideshow, click **New Slideshow** on the **Slideshow Toolbar**.



Creating a photo slideshow

You can create a slideshow by manually locating photos from your local drive. You can then add each one of them to create a photo slideshow.

To create a photo slideshow:

1. Click **New Slideshow: New Photo Slideshow** to open the **Add Photos** dialog box. Browse for photos to include in the slideshow.

Tip: To add multiple photos, press **[Ctrl]** while selecting the files in the **Add Photos** dialog box.

2. Click **Add** to create a new slideshow with the photos you selected. Click **Close**.
3. The slideshow is now added in the **Slideshow List**. To create another slideshow, simply repeat this procedure.

Tip: To add all photos in a folder, click **Add All**.

Creating a video slideshow

Aside from images, you can also use a video file or flash file as a slideshow. Each video or flash file added to your slideshow album counts as a separate slideshow.


To create a video slideshow:

1. Click **New Slideshow: New Video Slideshow** to open the **Open Video File** dialog box.
2. Locate the video file or flash file to use, and then click **Open** to add the file to your project. The video is now added as video slideshow in the **Slideshow List**.

Getting photos and videos from a digital camera

You can create a new slideshow by acquiring photos or small-sized videos from a digital camera. Here, all files taken using your digital camera are transferred to your local drive and imported as new slideshows.

To get photos or videos from a digital camera:

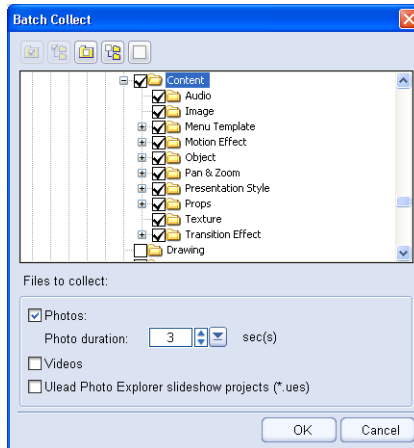
1. Click **New Slideshow: Get from Digital Camera** to open the **Get from Digital Camera** dialog box.
2. Locate the folder of your card reader or your digital camera by clicking . The device name, along with the number of pictures available in it are displayed in the dialog box.
3. Specify the folder where the images will be transferred in **Destination folder**. To create a new folder within the directory you specified, select **Create a new folder** and enter a folder name.
4. Click **Import** to start the transferring process. While acquiring, all the images in your digital camera are transferred to the specified folder and are imported into the program as a new slideshow.
5. Click **OK**. The acquired images are now added as a new slideshow in the **Slideshow List**. (See "Get from Digital Camera" on page 55).

Using Batch Collect

The **Batch Collect** feature searches your hard drive for photos, videos, or even existing slideshows created in Ulead Photo Explorer, and it automatically creates slideshows according to the respective directory names of the searched files.

To use the Batch-Collect feature:

1. Click **New Slideshow: Batch Collect** to open the **Batch Collect** dialog box.
2. Select the folders where the program will search for files.
3. Under **Files to collect**, select the types of files to search for such as images, videos, or slideshows. To specify how long each slide will stay visible during the slideshow in **Photo duration**.



4. Click **OK** to begin the search. When a certain file is found in your hard drive, CD & DVD PictureShow automatically creates a slideshow based on the corresponding folder name of the searched file.
5. After the search process, click **Close**. The slideshows are added in the **Slideshow List**.

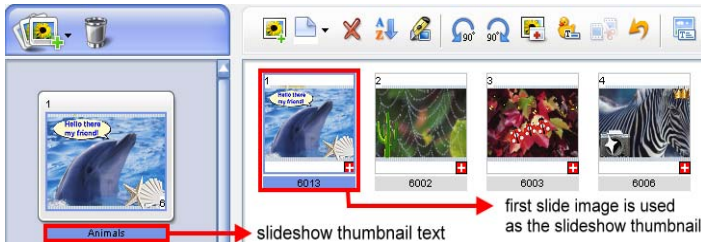
Modifying your slideshow contents

After creating all the slideshows for your project, you can now start customizing each slideshow by adding more images or splitting over-loaded slideshows into two. You can also arrange the order of appearance of the slides during slideshow playback. Each slide can be improved by adding captions, decorating them with text or clipart, or by improving their display quality using the ExpressFix feature.

Changing a slideshow's title text and thumbnail

In the **Organize** tab, you can change a slideshow's thumbnail as well as its title text. To change the slideshow's title text, simply click the title of the selected slideshow, and then enter a new title.

You can also change a photo slideshow's thumbnail, select the slide to use as the slideshow's thumbnail in the **Slide Panel**. Drag the slide to the front of the list. Whichever slide is in front will be the default thumbnail of the slideshow.



Tip: You can also set a slideshow thumbnail by right-clicking the slide and selecting **Set as Slideshow Thumbnail**.

To change a video slideshow's thumbnail:

Right-click the video slideshow thumbnail and then select **Set as Slideshow Thumbnail**. Drag the slider to the frame to use as your slideshow thumbnail. Click **OK**.



Adding images to your slideshow

You can add images to already existing slideshows by clicking **Add Photos** on the **Slide Toolbar**. In the **Add Photos** dialog box, simply locate the image folder, select the image files to insert, and then click **Add**.

Another way to add images to your slideshow is by acquiring images from other imaging devices like scanners.

To acquire images using TWAIN or WIA:

1. Click **Add Photos** on the **Slide Toolbar** to open the **Add Photos** dialog box.
2. Click **Acquire** and select **TWAIN** or **WIA** depending on the type of scanner or digital camera you are using.
3. Follow the dialog box instructions to specify file names and folder to use for saving images.
4. Make sure you select **Add acquired images to slideshow**. Otherwise, the acquired images will only be saved to the destination folder and will not be added to the slideshow you are working on.

Note: WIA (Windows Imaging Acquisition) is a feature in Microsoft Windows ME and Windows XP that enables applications to directly interact with imaging devices such as scanners or digital cameras. If you have CD & DVD PictureShow installed in either of these Windows systems and your imaging device is WIA compatible, you can directly acquire images without the need to install device drivers.

Arranging slides inside a slideshow

Arrange the order of appearance of your slides in a slideshow according to image file names or the date the image files were modified using the **Auto-arrange** feature.

To arrange slides inside a slideshow:

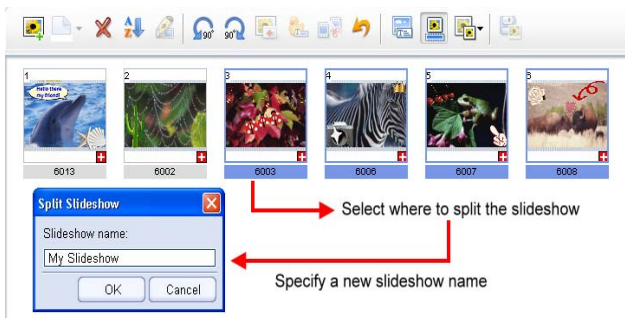
1. Select the slideshow to arrange in the **Slide Panel**.
2. Click **Auto-arrange** on the **Slide Toolbar**.
3. Select **Ascending by name** or **Descending by name** to arrange the images according to their file names or **Ascending by date** or **Descending by date** to arrange them according to their dates they were modified.

Splitting a Slideshow

Use **Split Slideshow** to divide the slideshow into smaller ones. This option provides you a faster method of rearranging your slideshows instead of manually removing the slides and creating a new slideshow.

To split a slideshow:

1. Select the slideshow to split in the **Slideshow List**.
2. In the **Slide Panel**, select the slide at the point where you want to split the slideshow.
3. Click **Split Slideshow** on the **Slide Toolbar**.
4. Specify a name for your new slideshow, and then click **OK**.



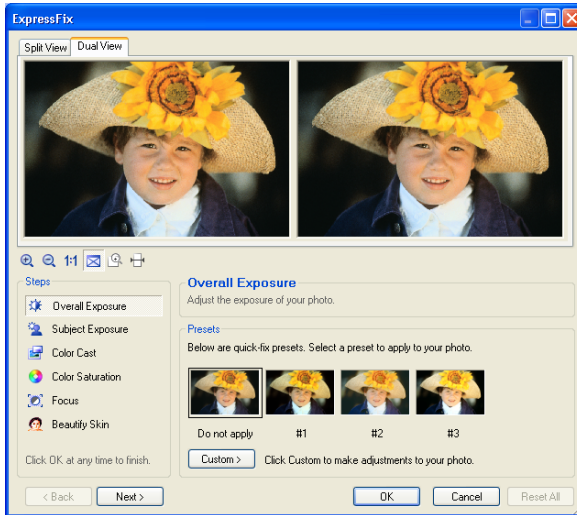
ExpressFix

ExpressFix is a timesaving tool that provides quick fixes to common digital photo problems such as improper color, unbalanced exposure, and out of focus conditions. Through a step-by-step interface, ExpressFix analyzes photos and presents various options to fix them. It also features Beautify Skin, which allows you to smoothen skin tones of portrait photos.

To apply ExpressFix:

1. Select a photo in the Slide Panel then click **ExpressFix** on the **Slide Toolbar** to open the **ExpressFix** dialog box.
2. Photo enhancement options are presented as Steps. Under Steps, you can apply these enhancements to your image:
 - **Overall Exposure** Adjusts brightness and contrast of the whole image.
 - **Subject Exposure** Adjusts the brightness of subject or background separately.
 - **Color Cast** Adjusts the color temperature, making it cooler or warmer.
 - **Color Saturation** Adjusts color hues.
 - **Focus** Adjusts from soft to sharp focus.
 - **Beautify Skin** Retouches skin areas by removing blemishes, softening its tone, and changing its color.

Click to select a step and make adjustments. While in a particular step, click **Do not apply** if you do not want to apply that particular enhancement.



3. Under **Presets**, click a thumbnail to apply a quick fix.
4. For finer adjustments, click **Custom**. Under **Custom adjustment**, the center thumbnail shows the current state of your photo and the surrounding thumbnails represent different changes that can be applied. Click the thumbnails to apply changes.

Note: Thumbnail variation determines the incremental changes for the thumbnails. Drag the slider up or down to have a lesser or greater application of changes.

If results are not satisfactory and you want to remove the custom adjustments in a step, click **Reset**.

If you go back to the **Presets** section, a Custom thumbnail is added.

5. When you have applied changes in a step, a check mark will be displayed in that step. Click **Next**, or to skip steps, just click a desired step.
6. To go back to previous steps, click **Back** or click a specific step. Since ExpressFix applies enhancements in the order specified

under Steps, enhancements after the current step will be removed from the image when you go back to previous steps. Before you exit the dialog box, remember to click on the remaining steps to reapply them.

7. The last step is **Beautify Skin**. This step lets you smoothen coarse and uneven skin.
8. When you are satisfied with all the enhancements, click **OK**.

Tip: Click **Reset All** to restore all options to their default values.

Decorating your photos

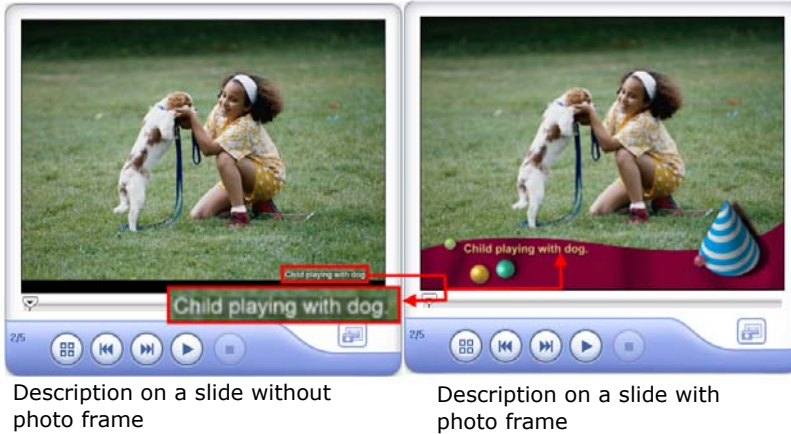
Add a touch of creativity to your photos by adding stylish text and vibrant images. Select the slide in the **Slide Panel** and click **Decorate** on the **Slide Toolbar** to open the **Decorate** dialog box. CD & DVD PictureShow provides a variety of image presets that you can add to decorate your slides. (See "Decorate" on page 55).



Adding descriptions

Aside from decorating your slideshow, you can also apply captions to your slides by using the **Add Description** feature. Adding descriptions to your images can help make your slideshows more informative and can be used as notes for future viewing.

The position of descriptions on your slide depends on the selected theme or photo frame. When there's no theme or photo frame applied to the slide, the descriptions are placed on the rightmost corner of the slide.



To add descriptions to your slideshow:

1. Select a slide in the **Slide Panel**.

Tip: You can add descriptions to multiple slides at once. Press **[Ctrl]** to select the slide(s) or right-click in the **Slide Panel** and click **Select All**.

2. Click **Add Description** on the **Slide Toolbar** to open the **Add Description** dialog box.
3. Use the navigation buttons to select the slide. Enter description, and then click **OK**.


Tip: Click **Apply to All** to apply the description to selected images in the slideshow.

Multi-trim Video

The **Multi-trim Video** feature is a method for breaking down a video clip into multiple segments. It gives you complete control

over the clips you wish to extract, making it easy for you to portion your video that you want to keep for your slideshow.

To use Multi-trim Video feature:

1. Select a video or flash slideshow in the **Slideshow List** then click **Multi-trim** on the **Slide Toolbar** to open the **Multi-trim Video** dialog box.
2. In the **Multi-trim Audio** dialog box, view the whole clip first by clicking  to determine how you want to mark segments.
3. Drag the **Jog Slider** until you get to the part of the video that you want to use as the beginning frame of the first segment. Click **Start**.
4. Drag the **Jog Slider** again, this time, to the point where you want the segment to end. Click **End**.
5. Do steps 3 and 4 repeatedly until you have marked all the segments you want kept or removed.



Tips:

- To mark segments, you can also press **[F3]** and **[F4]** while playing the video.
- Click **Invert Selection** to toggle between marking segments that you want to retain or marking segments that you want taken out from the clip.

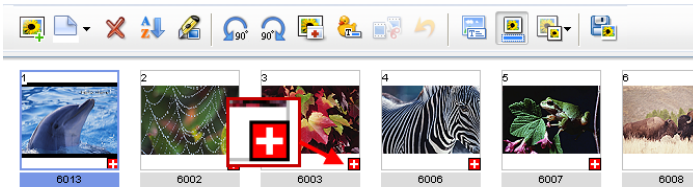
6. Click **Play** to view the trimmed video.
7. Click **Ok**.

Using Display Reminder

The **Display reminder** feature allows you to identify if slides in your slideshow meet the target display size of the slideshow album. It simply marks the images whose display sizes are smaller than the slideshow's target display size specified in the **Preferences** dialog box. This way, you can make necessary adjustments to these images in order to meet the slideshow's preferences.

To use display reminder:

1. Select **File: Preferences** to open the **Preferences** dialog box.
2. Select **Display reminder** in the **General** tab.
3. Click **OK**. Images with lower display sizes are marked with an icon at the lower right corner.



Playing back a slideshow

You can preview your slideshows to check the order, captions, and decorations even before applying a theme to it. To preview a slideshow, right click a slideshow and select **Play**, or double-click the slideshow's thumbnail. During playback, you can navigate through the slideshow using the navigation controls located at the upper right corner of your computer screen.



Saving a photo as a separate file

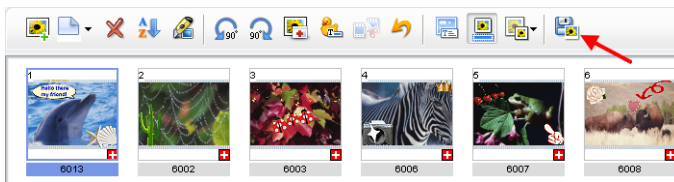
You can save your photos as a separate file after fixing them.

To save your photo:

1. In the **Slide Panel**, select the photo you want to save as a

separate file and click  in the **Slide Toolbar**.

2. In the **Save As** dialog box, enter a file name and the location where to save the file then click **Save**.



Theme

Apply a menu and slideshow design template to your slideshow album or customize your own in the Theme tab.


In this section you will learn to:

- Apply a theme to your slideshow album.
- Customize your disc menu appearance, or add motion menus and audio.
- Customize your slideshow photo frame, effects, and audio.

Applying a theme to your slideshow album

For speed and ease in designing your slideshow album, simply select from the list of theme presets in the **Gallery** tab. All the backgrounds, effects, and audio that come with the theme are automatically applied to your slideshow album.

To apply a theme to your project:

1. Click the **Gallery** tab.
2. Select a theme category from the drop-down list. All the theme presets are displayed below the category.
3. Select a theme and click **Apply**. You can also double-click the selected theme to apply it to your slideshow album. To know the menu and slideshow settings of the selected theme, click .



Tip: Select **Use Theme slideshow settings** to apply the different effects like transition effects, pan & zoom, and audio to your entire project.

Customizing menus

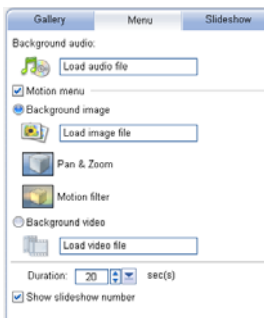
The menu is one of the first things your audience will see when viewing your slideshow album. Creating an impressive menu is a good way to capture your audience's attention as well as provide them with an easy way of navigating through the disc. To customize a theme's menu settings, click the Menu tab under Theme.



Modifying onscreen text



You can customize the text in your menu in the **Preview Panel**. Here, you can edit the text or change its font attributes. You can also remove text in your slideshow. Simply right-click to access corresponding context menus.




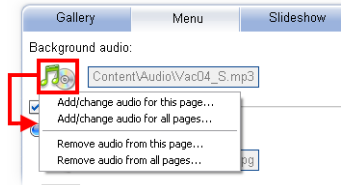
You also have the option to choose whether or not to display the slideshow numbers by selecting **Show slideshow number** in the **Menu** tab.

Modifying background music

Aside from the music template that comes with a selected theme, you can specify your own or remove the existing background audio of your menu.

To specify a background music to your menu:

1. Click  and then select whether to replace or remove the default background audio of the current menu page or all the pages. Locate the audio file to use in the **Open Audio File** dialog box.



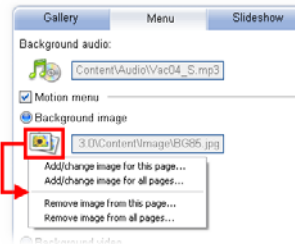
2. Click **Open**.

Specifying a menu background image

Personalize your project menu by replacing the theme's background image with your preferred image.

To specify a menu background image:

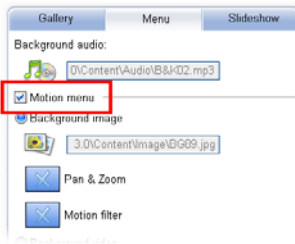
1. Select **Background image**.
2. Click  to display its options. Specify whether to use the background image for the current page only, or for all pages.
3. Locate the file to use as your background image and then click **Open** to apply it to your menu.



Some menu templates from the **Gallery** tab have decorations over the background image. These decorations are kept even if you change background image.



Motion Menu on DVD slideshows



Animate your DVD menu to make it more interesting to your audience. By selecting **Motion menu** in the **Menu** tab, each slideshow thumbnail in your menu will play a quick preview of the slides. You can also apply **Pan & Zoom** and **Motion filter** to your menu if this option is selected.

Using Pan & Zoom and Motion filter to your menu

Apart from using a still image for your menu background, you can choose to liven up your project menu by animating its background image. You can use the **Pan & Zoom** effect, which animates your background image by moving your image from one fixed point to another and by changing the viewing distance, or you can also use the **Motion filter**, which contains several different types of animations to apply to your image.

To apply the Pan & Zoom effect:

1. Click **Pan & Zoom** under **Background image**.
2. Select the effect you want to use from the list.



Original theme

To use Motion filter:

1. Click **Motion filter** under **Background image**.
2. Select the effect you want to use from the list.

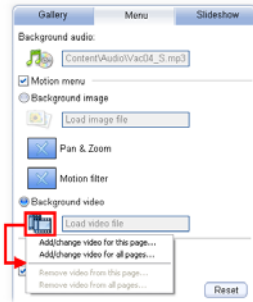
Note: **Duration** determines how long the motion menu will play before it loops back to the start. The effects continuously play back as long as the disc menu is on display.

Using a video as a menu background

You can also use videos as your menu background besides images.

To use a video as your menu background:

1. Select **Background Video**.
2. Click the button and then specify whether to use a background video for the current page only, or for all pages.
3. Locate the file to use as background video and then click **Open**.



Note: **Duration** determines how long a video will play before it loops back to the start. The video continuously plays back as long as the disc menu is on display.

Customizing your slideshows


In addition to selecting and applying a theme to your project, you can also customize the theme's slideshow settings. This allows you more control over the general look and feel of each of the slideshows in your project.

Note: Properties of previously customized slideshows are kept intact even if you change the theme of your slideshow album. To apply the properties of the selected theme, click **Reset** in the **Slideshow** tab, and then corresponding theme properties will take effect on customized slideshows.

To customize a slideshow:

1. Select the **Slideshow** tab under **Theme**. This opens a new set of controls in the **Preview Panel**.
2. Click **Browse** in the **Preview Panel** and select which slideshow to customize.
3. Begin modifying each option in the **Control Panel**.



Tip: Click  to reset the duration of the photos back to the time entered in **Photo duration**.

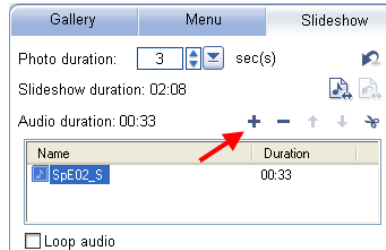
All settings in the Slideshow tab applies to all photos in the slideshow. To customize the settings of a single photo in your slideshow, click **Audio & Effect**. To learn about Audio & effect, see ["Using Audio & Effect" on page 38](#).

Adding and editing background audio

Set the mood for your slideshow by using your own music as background.

To add background music:



1. Select the **Slideshow** tab under **Theme**.
2. Click **Browse** in the **Preview Panel** and select the slideshow to customize.
3. Click **Add Background Audio** and locate the audio file to use in the **Open Audio File** dialog box.



Tip: You can also use music from an audio CD as your slideshow background music.

4. Click **Open**.
5. Repeat steps 3 and 4 to add more audio files.



To play the audio clip repeatedly when the audio duration is shorter than the slideshow duration, select **Loop audio**.

You can match the slideshow duration to the audio duration by clicking . Click  to undo the action.

Deleting an audio clip

Select the audio clip you want to remove and click .

Rearranging the order of the audio clips

Move the position of the audio clip by selecting the audio clip you want to move and clicking either  or .

Tip:





You can also add background music, delete an audio clip and rearrange the position of the audio clip using **Audio & Effect**.


To learn how to use **Audio & Effect**, see ["Using Audio & Effect" on page 38](#).

Trimming an audio clip

Trimming your audio clip lets you remove unwanted parts in your slideshow background music.

To trim an audio clip:

1. Select the audio clip you want to trim in the list and click **Trim Audio**.
2. In the **Trim Audio** dialog box, drag the **Jog Slider** to specify the beginning of the audio clip and click . Drag the **Jog Slider** again to the point where you want to cut the audio clip then click .
3. Select **Set Fade-in**  or Set **Fade-out**  to make the audio of your slideshow fade smoothly from one audio clip to the next. Click **OK**.

Tip: The icon beside the audio clip changes to  when the clip has been trimmed.

Adding sound annotation to slideshows

Aside from using background music, you can also combine sound annotations to your slideshow. Sound annotations are like narrations being heard, along with the background music, during slideshow playback.

To learn how to add sound annotation, [see "To add a sound annotation:" on page 42.](#)

Applying a frame

Add style to your slideshow photos by applying a photo frame. The program provides with you plenty of frames to choose from.



To apply a frame:

1. Click **Browse** in the **Preview Panel** and select the slideshow whose photos you want to apply a frame to.
2. Click **Photo Frame** in the **Slideshow** tab.
3. Select a frame category and then select a frame from the list to apply to your slideshow.

Applying a transition effect to your slideshow

Transition effects determine how one photo turns into the next within a slideshow.

To apply slideshow transition effect:

1. Click **Browse** in the **Preview Panel** and select which slideshow you want to apply the transition effect.
2. Click **Transition Effect** in the **Slideshow** tab.
3. In the **Transition Effect Settings** dialog box, select a transition category and then select a transition effect from the list to apply to your photo.
4. Type in your desired duration and click **OK**.



Applying Pan & Zoom to your slideshows

Pan & Zoom is applied to photo slideshows, and it emulates the pan and zoom effect of a video camera.

To apply slideshow Pan & Zoom effect:

1. Click **Pan & Zoom** in the **Slideshow** tab.
2. Select a category and then select an effect from the list to apply to your photo.



Using Audio & Effect

You can customize the settings of each photo in your slideshow by using the **Audio & Effect** dialog box. To open the **Audio & Effect** dialog box, click **Audio & Effect** in the Slideshow tab.

To add background music:

1. In the Folder tree, select the folder where the background audio clip is located.
2. In the **Browse** pane, select the audio clip you want to add to your slideshow then click **Add Background Audio**.

Tip: You can also drag the audio clip onto the sound track to add it.

To add background audio starting at a certain photo in the slideshow, drag and drop the file onto the desired photo in the photo list.



To play the audio clip repeatedly when the audio duration is shorter than the slideshow duration, select **Loop audio**.

To trim audio:

In the storyboard, select the audio clip you want to trim then click



To learn how to trim the audio clip, see [“Trimming an audio clip” on page 35](#).

To adjust the position of the audio clip

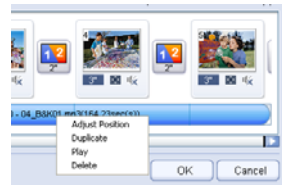
There are two ways to adjust the position of the audio clips.

Using drag and drop:

Drag the audio clip from the storyboard onto the desired photo, the audio clip will start playback from that photo.

Using Adjust Position:

1. Right-click the audio clip on the storyboard and select **Adjust Position** to open the **Adjust Position** dialog box.
2. Select whether to make the audio clip **Move forward** or **Move back** then enter how many second to move the audio clip.
3. Click **OK**.




To customize Pan & Zoom effect for a single photo:

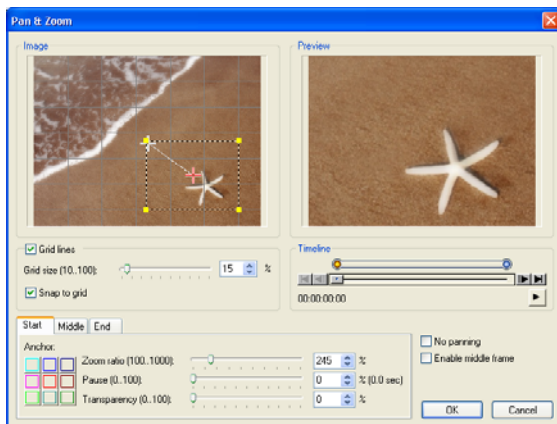
Pan & Zoom is applied to still images. To apply this effect, select the photo on the storyboard and click . In the Pan & Zoom dialog box, you can either choose Preset or Custom for your slideshow.

Preset:

Select a pan & zoom effect you want to apply to your photo.

Custom:

Click **Custom** to open the **Pan & Zoom** dialog box. In the Pan & Zoom dialog box, the **Start**, **Middle** and **End** tabs and the crosshairs  in the Image Window represent the three points (or key frames) in the image clip where settings can be customized to produce the pan and zoom effect. When customizing each key frame, use the Image Window to focus on an area or to pan the image; use the tab settings to customize the zooming effect.



The procedure below shows an example of how to first zoom in on a subject, then pan and zoom out to show the whole image.

To apply Pan & Zoom:

1. Drag the **Start** key frame, represented by the left crosshair in the Image Window, to the subject you want to focus.




2. Zoom in on the subject by minimizing the marquee box or by increasing the **Zoom ratio**.



3. Set the **Pause** time to the amount of time to stay on the subject before panning and zooming out.
4. Click the **End** tab. Drag the **End** key frame, represented by the right crosshair in the Image Window, to the center of the image. Zoom out to show the whole image by enlarging the marquee box or by setting the **Zoom ratio** to the lowest value.



5. Click  to preview the effect.
6. Click **OK** to apply the effect to the image.

Tips:



- Click the **Anchor** boxes to move the marquee box at fixed positions in the Image Window.
- To zoom in or out of a fixed area without panning the image, select **No panning**.

To customize transition effect for a single photo:

On the sound track, select the photo you want to customize the transition effect and click .

To learn how to use the Transition Effect Settings dialog box, see ["To apply slideshow transition effect:"](#) on page 37.


To add a sound annotation:

1. Select a photo on the sound track and click  on the photo slide to open the **Photo Options** dialog box.
2. Select **Enable sound annotation** to add a sound clip to the selected photo.
3. Click **Select audio file** and locate the audio file you want to use. You can also directly record your own using **Record Audio**. Click  to start the recording process.

Note: **Embedded sound** is enabled when the selected photo contains embedded sound.

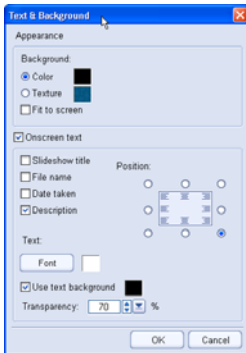
4. Click **Play Slideshow** to preview the result of the combined background music and sound annotation.

To adjust the duration of a photo:

On the storyboard, select the photo whose duration you want to change then click . In the **Photo Options** dialog box, select whether to use the original or a customized duration.

Tip: Select **Same as sound annotation** to match the photo duration to the sound annotation duration.

Customizing background and description



By accessing the Text & Background Settings dialog box in Text & Background, you can also use colors or textures, apart from Photo Frame as background to your slideshows. Applying a theme to your slideshow album disables most of the functions in this dialog box. To use them, remove the layout style in Photo Frame.

In this dialog box, you can also customize the properties of your slideshow descriptions.

Adding a First Play Video

You can add a short video clip that plays at the very beginning before the menu screen is shown. This is often used to display introduction messages and copyright protection warnings.

To add a First Play Video:

1. Click the **Gallery** or the **Menu** Tab.
2. In the **Preview Panel**, click **First Play Video**.
3. In the **Open Video File** dialog box, select the video file then click **Open**.



Previewing your slideshow album

See how your menu and the slideshows look like when played on a CD or DVD player. Use the **Preview Panel** to simulate a typical CD or DVD remote control that you can use to play or navigate through your slideshow album.

To preview your slideshow:

1. Click the **Gallery** or the **Menu** Tab.
2. In the **Preview Panel**, click **Preview**. The Navigation Controls switches to a remote control. Use the remote control to preview your slideshow.



Remote Control in DVD



Remote Control in VCD/SVCD

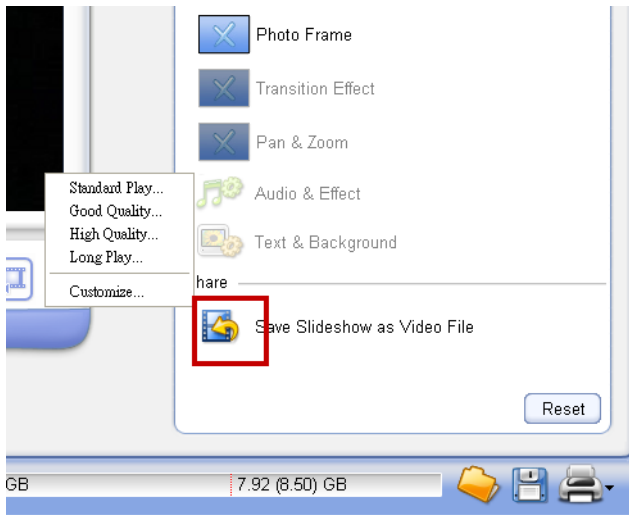


You can also specify what action to take after a slideshow is finished playing back. To specify, click **Options** in the **Preview Panel** and in the dialog box that opens, select either **Back to Menu** or **Continue to play the next clip**.

Saving the slideshow as a separate video file

Save a specific slideshow from your project as a video file.

1. Click the **Slideshow** tab under **Theme**.
2. Click **Save Slideshow as Video File** and select a video quality from the list.
3. Enter a location where you want to save the video in **Save in**.
4. Type in a file name and click **Save**.



Tip: Select **Customize** to set your own video format and settings.

Burn

This is the final step in the slideshow creation process. Go to **Burn** tab and specify the settings to use for burning the slideshow disc.

Burning your project to disc

Let everyone see your photos. Record your slideshow album to a CD or DVD disc so you can play it on a CD or DVD player.

To burn your project to a disc:

1. Under **CD/DVD recorder**, enter a disc name under **Disc volume label**.
2. Locate the disc drive to use for burning in **Drive**, and then the number of disc copies to create.
3. Select **Record to disc**. This burns your project to DVD, SVCD, or VCD depending on which type you selected in the **Output Format Selection Menu**.



Tip: Click **Options** to specify drive information, project file to include on disc, and other advanced settings. (See “Output Options” on page 62).


4. Click **Burn Now** to output your project to a disc.

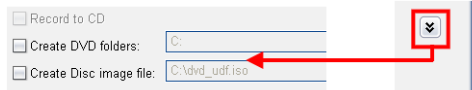
Tip: Click **Erase Disc** to delete the contents of the CD-RW/DVD-RW/DVD+RW.

Creating a disc image file or DVD folder

A **Disc image file** is an exact copy of your finished project. You can use this file to burn multiple copies of your project at any time. A **DVD folder** is a replica of your disc on the hard drive so you can view your project on a DVD-video player software in your computer.

To burn a disc image file or DVD folder onto a disc:

1. Click  under **Disc information**. Select **Create DVD folders** or **Create Disc image file** depending on the type of output you want to create.




Tip: You can select all three options at once if you want all three output types. The amount of space used by each type of output selected will be displayed under **Required space**.

2. Specify the location where to create the disc image file or DVD folder.
3. Click **Burn Now**.

Printing CD index and CD label

Print index pages and custom-designed labels for your slideshow discs.

Printing CD label

1. Click  and select **Print CD Label**.
2. Under **Output options**, select the **Printer** and **Paper size** to use for printing. Click the available buttons to choose between portrait and landscape orientation.
3. If you will be designing and printing dual label stickers on a single page, click the CD icons in **Edited CD label** to switch between the two labels and create different designs for each.
4. To apply a solid color as the base for the CD label, click the color box and select a background color.
5. Click **Add Image** to select one or more images to add on the CD label. To resize an image, drag the surrounding handles. To move an image, click and drag it to the desired position on the label.
6. Click the **Image** tab.
7. Adjust **Brightness**, **Contrast** and **Transparency** levels of each added image.
8. To add text, double-click on the CD image in the preview window and type your text.
9. Click the **Text** tab.

Tips: If you added several elements, such as images and text, on the CD label:


- Press **[Ctrl]** and click each element to select multiple elements.
- Right-click the selected elements and select commands from the menu to align the elements, arrange their order, etc.

10. Format each added text by changing the font type, size, style, text color and alignment. Adjust the text **Transparency** level accordingly.
11. Select the **Shadow** to add a drop-down shadow to the selected text, and click the color box to set the shadow color. Adjust the **X/Y offset** values to set the shadow position in relative to the position of the text.

Tip: The shadow position can also be flexibly adjusted by simply dragging the shadow. The shadow has a round, green handle which you can click and drag to adjust its position.

12. Click **Save CD Label** to save your work on a CD label file (*.UPL).
13. Click **Print** to print the CD label.

Printing CD index

1. Click  and select **Print CD Index**.
2. In the **General** tab, select the **Printer** and **Paper size** to use for printing. Click the available buttons to choose between portrait and landscape orientation for the printed pages. Also specify the number of **Copies** to print.
3. Click the **Layout** tab.
4. Choose how to print thumbnails on the paper size selected in the **General** tab.
 - **Fit selected paper size** Uses the full paper size when printing thumbnails.
 - **Fit CD cover size** Prints thumbnails within the standard CD cover size. The selected paper size will not be completely filled up.

5. Choose what contents to print on the index pages. You can print **Slideshow thumbnails only**, **Slideshow photos**, **All photos** (continuous printing), or print a single slideshow only.

Tip: The **Enlarge thumbnail size** option affects only low-resolution photos. When selected, original photos will be scaled up to fit the thumbnail frame size, which may result in poorer print quality. When cleared, photos will only be scaled to at most double their original size, which enhances thumbnail prints.

6. Specify the number of rows and columns to print on each index page.
7. Click the **Text** tab.
8. Select the check boxes of items you want printed on the index pages. To print a disc title, type the desired title in the provided text box. Click **Font** beneath each item to apply varying font types or styles.
9. Click **Print** to print the CD index pages.






Appendices

Appendix A: Organize











Slideshow Toolbar

New Photo Slideshow	Browse for image files in your hard drive, and then add them to create a slideshow.
New Video Slideshow	Browse for a video file to create a video slideshow.
Get from Digital Camera	Transfers images or videos from your digital camera to your hard drive, and then creates corresponding slideshows in the Slideshow List.
Batch Collect	Automatically locates every image or video file in the selected hard drive/s or folder/s. Slideshows are automatically added according to the searched directory names.

Slide Toolbar

 Add Photos	Opens a dialog box from which you can add more photos to the selected slideshow.
 Insert Blank Slide	Inserts a blank slide in the Slide Panel . Click the arrow to select a color.
 Delete Photo	Removes the selected slide(s) in the Slide Panel .
 Auto-arrange	Sorts the slides into descending or ascending order based on their image file names or dates of creation.
 Split Slideshow	Divides the slideshow into two. The selected slide in the Slide Panel marks the starting point where the slideshow will be divided.

Slide Toolbar

 Rotate Left	Rotates the selected slide(s) 90 degrees counterclockwise.
 Rotate Right	Rotates the selected slide(s) 90 degrees clockwise.
 ExpressFix	Opens a dialog box where you can apply quick fixes to common digital photo problems.
 Decorate	Opens a dialog box from which you can add text, clipart, or images to the selected slide.
 Multi-trim Video	Opens a dialog box where you can break down a video or flash slideshow into multiple segments.
 Restore	Restores the original state of the slide.
 Add Description	Opens a dialog box from which you can add text to describe the selected slide(s).
 Show/Hide Filename	Shows or hides image file names in the Slide Panel .
 Change Thumbnail Size	Select the display size of slide thumbnails in the Slide Panel .
 Save Photo as a separate file	Saves the selected photo in the slideshow as a separate file.

Appendix B: Dialog Boxes













Add Description

Current Photo	Displays the photo where the description will be displayed.
----------------------	---








Add Description

Description	Enter the text description for the photo.
Apply to All	Applies the description to the selected photos.

Audio & Effect

	Moves to the previous directory.
	Moves to the next directory.
	Moves to the previous folder.
	Plays back the selected audio clip.
 Add Background Audio	Adds the selected audio file to the slideshow.
Total Duration (audio/slideshow)	Displays the current slideshow and audio durations.
	Selects the first slide in the slideshow.
	Selects the previous slide.
	Selects the next slide.
	Selects the last slide in the slideshow.
	Removes all inserted audio files from the slideshow.
	Removes the selected audio file from the slideshow.
	Opens the Trim Audio dialog box where you can cut the duration of the audio clip and apply fade-in and fade-out effects.

Audio & Effect

	Click to match the slideshow duration to the audio duration.
	Click to undo match slideshow to audio duration.
	Select to drag the slider to specify background audio volume.
 Play slideshow	Plays back the slideshow including the inserted audio files and sound annotations.
No. of photos/ duration	Displays the number of photos selected on the Timeline and their total duration.
	Opens the Pan & Zoom dialog box where you can set a specific or customized pan & zoom effect for your selected photo.
	Opens the Photo Options dialog box where you can set the duration and add a sound annotation to the selected photo.
	Opens the Transition Effects dialog box where you can set a specific transition effect for the selected photo.
Loop Audio	Select to play the slideshow background music repeatedly.

Add Photos

Add	Adds the selected photo(s) to the current slideshow.
Add All	Adds all the photos in the current folder to the current slideshow.
Acquire	Import photos from a TWAIN or WIA device and transfer them to the slideshow.
Default Duration	Enter a value or drag the slider to specify how long the photos will be displayed during slideshow playback.

Audio Recorder

Duration	Displays the length of the audio recording.
Start Recording	Click to begin audio recording.
Stop playback/recording	Click to stop playback or recording action.
Play selected sound file	Click to play back the recorded audio file.
Microphone	Drag the slider to specify the recording volume of the microphone.

Decorate

Text	Allows you to add text or modify the text attributes on the current slide.
Text settings	Specify text font, size, and style to apply to the photo.
Transparency	Adjust the opacity level of the text, a higher value makes text less visible.
Shadow	Select to apply a shadow to the text. Click the color box to specify its color.
X-offset	Enter the horizontal distance of the shadow from the text.
Y-offset	Enter the vertical distance of the shadow from the text.
Transparency	Adjust the opacity level of the shadow, a higher value makes the shadow less visible
Use Other Props	Click to add extra photos as decorations.
Props	Select from available preset objects to use as decorations.

Get from Digital Camera

Import	Click to begin importing photos or videos from the camera.
---------------	--

Get from Digital Camera

Refresh	Click to refresh the camera memory card contents.
Destination folder	Specify the directory where the imported photos will be saved.
Create a new folder	Select and then create a new folder in the specified directory where the imported photos will be saved.
Erase camera contents after transfer	Select to empty camera after photos have been transferred.
Renumber images to make sure that each file name is unique	Select to create index files of photos.
Split photo slideshow automatically	Automatically splits the imported photos into slideshows according to their dates or based on the specified number of photos per slideshow.

Text & Background

Background	Select to use an image or color as slide background. Use the boxes to specify a color or to locate an image file to use as a texture.
Fit to Screen	Click to allow photos to be proportionally resized to fit on the screen.
Onscreen text	Select to display slide/slideshow information such as Slideshow title , File name , Date taken , and Description on the screen during playback.
Position	Specify which part of the screen you want the description to appear.
Font	Click to specify font style, size, and attributes.

Text & Background

Use text background	Select to use a color as background for the text.
Transparency	Set the opacity level of the text background. A higher value makes the background less visible.

Preferences

General	
Working folder	Specify the directory where the project will be saved.
Display reminder	Select to mark photos in the slideshow whose display sizes are smaller than the specified slideshow display size. These marks are represented by a white cross at the bottom right of the photo.
Photo duration	Specify how long a slide stays on the screen during slideshow playback.
Use Joliet file system (for long file names)	Select to allow long file names to be recorded on the disc. Note: If you choose not to use the Joliet file system, the standard naming convention of 11 characters will apply to your files. File names longer than 11 characters are truncated and the tilde (~) is added.
Check Ulead's Web site every ____ days	Automatically checks Ulead's Web site at a specified number of days interval for product news and updates.

Preferences

Output Settings	
TV system	Specify whether your disc can be played on an NTSC or PAL player. NTSC is predominant in North America and many Asian countries. PAL is the standard used in Europe and the South Pacific. Use the Select the target country or region option to automatically determine which video format to use based on the country you choose.
Navigation controls	Specify what action to take after your slideshow playback is finished.
Disc Format Settings	Click SVCD Options to specify which SVCD format to use on your disc.
Show title-safe area	Set the viewable area of the text in the Preview Panel. This acts as a guide to ensure that the text is not truncated when viewed on a TV screen. Recommended values are NTSC:12%, PAL:10%.
Apply anti-flickering filter	Select to reduce the blinking effect and improve display quality for TV viewing. Leave this on if you plan to play your slideshow primarily on a TV.
Apply color filter	Select to configure PictureShow to confine its color palette to those visible in the NTSC and PAL filter color space to make sure that all the colors are valid. Clear for monitor display only.

Print CD Index

Print Page	Click to print the CD index page
Print All	Click to print all CD index pages.
General	
Printer name	Select a printer to use.

Print CD Index

Paper size	Select a paper template to work on.
Copies	Enter the number of copies to print.
Layout	
Fit to selected paper size	Select to layout the photo thumbnails on the selected type of paper.
Fit to CD cover size	Select to layout the photo thumbnails on a standard CD cover.
Print range	Select which photos and how to print the index.
Slideshow thumbnails	Select to print only the thumbnails of each slideshow.
Slideshow photos	Select to print all the photos in each slideshow. Printing photos begins on a new page for each slideshow.
All photos	Select to print all photos in each slideshow continuously without creating new pages for each slideshow.
Thumbnail layout	Enter a number or drag the slider to specify the number of photos per row and column in each index page.
Enlarge thumbnail size	Select to enlarge the thumbnail size so that they fit the frames.
Reset	Click to restore all settings to their default values.
Text	
Show disc title	Click to show the disc title on the index page.
Show slideshow title	Click to show the slideshow title on the page.
Show page number	Click to display the page number.
Show title on first page only	Click to show the slideshow title on the first page only.

Print CD Label

General	
Printer	Select which printer to use.
Printer properties	Click to open a dialog box where you can set your printer properties before printing.
Paper size	Select a paper template to work on or create your own customized template.
Copies	Specify the number of copies to print.
Currently selected label	Displays a preview of the currently selected paper template.
Texture	Select to use an image file as your disc label background. Click Browse to select the image file to use.
Color	Select to use a solid color as your disc label background. Click the color box to select your desired color.
Transparency	Adjust the transparency of the background by entering a value or using the slider.
Image	
Brightness	A higher value increases the brightness of your image.
Contrast	A higher value makes midtone colors in the image stand out more.
Transparency	A higher value makes the image more transparent.
Fit to Window	Stretches and resizes an inserted image proportionally so that it is centered horizontally and vertically and its edges cover the sides of the disc label.
Shadow	Select to apply a shadow to the image.
Shadow color	Click to specify a shadow color.
X-offset	Enter the horizontal distance of the shadow from the selected image.

Print CD Label

Y-offset	Enter the vertical distance of the shadow from the selected image.
Transparency	Adjust the transparency of the shadow by entering a value or using the slider.
Text	
Wrap Text	Select to wrap the text into a circle. Enter the number of times you want to repeat the text in Count .
Fit to Window	Click to fit the text into the disc label. Selected text will be stretched proportionally and centered vertically and horizontally.
Shadow	Select to apply a shadow to the text.
Shadow color	Click to specify a shadow color.
X-offset	Enter the horizontal distance of the shadow from the text.
Y-offset	Enter the vertical distance of the shadow from the text.
Transparency	Adjust the opacity level of the shadow, a higher value makes the shadow less visible
Add Image	Click to select an image to add on the label.
Add Text	Click to add text on the label.
Options	
Load Disc Label	Click to open a previously saved disc label project.
Save Disc Label	Click to save your disc label project.
Show/Hide Disc	Click to show/hide the outline of the disc for better alignment of images or text.
Show/Hide Grid	Click to show/hide gridlines for laying out images and text symmetrically.

Print CD Label

Clear Content	Click to remove all objects and background from the disc layout. This is useful when starting over with your design.
----------------------	--

Output Options

Drive Information	Specify the settings for your burning device.
Drive	Select the disc burner to use to burn your slideshow album.
About	Click to show information about the burning engine used in this software.
Recording speed	Select the recording speed that you want to use to burn your slideshow album.
Files to include on disc	Choose additional items that you want to include on the disc.
Photo files	Select to include photo files used in your slideshows on the disc.
Video/Audio files	Select to include the video and sound files used in your slideshows on the disc.
Project file	Select to include the CD & DVD PictureShow project file that you created on the disc for later use.
Copyright	Select to include copyright information on the disc to be burned.

Output Options

Advanced Settings	
Perform writing test before recording	<p>Select to simulate the recording process before burning onto a disc. This checks if the system speed or CD-ROM/DVD-ROM speed is fast enough to send data to the burner device at the specified write speed.</p> <p>If your burning device has Buffer Underrun Protection and it is enabled, you can clear Perform writing test before burning to save time when burning.</p>
Enable buffer underrun protection	Select to ensure an uninterrupted flow of data to minimize the risk of error in the burning process.
Format DVD+RW	Select to format the DVD+RW disc before burning. Enabling this option will prolong the burning process but will ensure successful burn.
Do not close disc	Select to be able to further modify disc contents at a later time.

Relink

Missing files	Displays the files in the slideshow which are either deleted or moved to another location.
Search results	Displays the search results for the missing files after the Smart Search option has been used.
Smart Search	Click to perform a search for the missing files. Specify the folders to search in the Smart Search dialog box.
Apply	Click to link the searched results to the program.

TWAIN

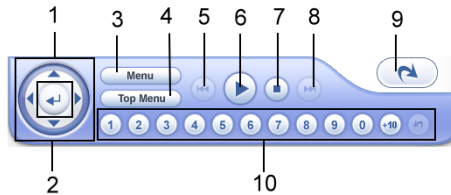
Select data source	Specify the type of TWAIN device to use to acquire photos.
Folder to save images	Specify the folder where acquired photos will be saved.
File Format	Select the file format to use for your photos.
File name prefix	Enter a prefix to use as part of the file name for the acquired files. The specified prefix is added before the number of the acquired file. (Ex. Pic12)
Add acquired images to slideshow	Select to import acquired images directly into your slideshow.

WIA

Folder to save images	Specify the folder where acquired photos will be saved.
Add acquired images to slideshow	Select to import acquired images directly into your slideshow.

Appendix C: Remote Control

The **Remote Control** allows you to simulate the behavior of your project's titles and menus. Use the buttons available on the Remote Control to preview your slideshow album. The available buttons on the Remote Control will depend on the type of media (DVD, VCD, or SVCD) you are working on.



1 Direction Buttons (DVD)	Use to navigate through your menu page in your DVD project.
2 Enter (DVD)	Activates the selected button.
3 Menu (DVD)	Goes to the last visited menu of your DVD project.
4 Top Menu (DVD)	Goes to the first menu of your DVD project.
5 Go to previous menu	Goes to the previous menu.
6 Play/Pause	Toggles between playing back your project and temporarily stopping the playback of your title.
7 Stop	Ends project playback.
8 Go to next menu	Goes to the next menu.
9 Back	Goes back to edit your slideshow album.
10 Digit buttons and Return (VCD/SVCD/DVD)	Click a number to play a tittle assigned to that number. Click Return to go back to the last visited menu page.

Index

A

- Add Description 23
- Add Photos 19
- Adding a First Play Video 43
- Auto-arrange 20

B

- Batch Collect 17
- Browse 33
- Burn
 - Burning your project to disc 46
- Burn tab 14
- Burning your project to disc 46
- Burn 46

C

- Capacity Bar 12
- Control Panel 12
 - Gallery tab 12
 - Menu tab 13
 - Slideshow tab 13
- Customizing menus 29
- Customizing your slideshows 32
 - Adding and editing background audio 34
 - Adding sound annotation to slideshows 36
 - Applying Pan & Zoom to your slideshows 37

- Selecting a slide layout style 36
- To add background music 38

D

- Decorate 23
- Dialog boxes
 - Pan & Zoom 39
- Display Reminder 26

G

- Gallery tab 12, 28
- Get from Digital Camera 16
- Getting Started 6

M

- Menu
 - Modifying background music 30
 - Modifying onscreen text 29
 - Motion Menu on DVD slideshows 31
 - Pan & Zoom and Motion filter 31
 - Specifying a menu background image 30
 - Using a video as a menu background 32
- Menu tab 13, 29
 - Background image 30
 - Background Video 32

- Motion filter 31
- Motion menu 31
- Pan & Zoom 31
- Modifying slideshow contents 18
- Motion filter 31
- Motion menu 31

N

- New Photo Slideshow 15

O

- Open Audio File dialog box 30

Organize

- Creating a slideshow 15
 - Batch Collect 17
 - Creating a photo slideshow 15
 - Creating a video slideshow 16
 - Getting photos from a digital camera 16
- Modifying your slideshow contents 18
 - Adding descriptions 23
 - Adding images to your slideshow 19
 - Arranging slides inside a slideshow 20

- Changing a slideshow's title text and thumbnail 18

- Decorating your photos 23

- Organize 15

- Output Format Selection Menu 12

P

- Pan & Zoom 31, 37
- Pan & Zoom dialog box 39
- Playing back a slideshow 26
- Preferences 8
- Preview Panel 29, 33, 44
- Previewing your slideshow album 44
- Print CD Index 49
- Print CD Label 48
- Printing CD index 49
- Printing CD index and CD label 48
- Printing CD label 48

S

- Setting your preferences 8
- Slide Panel 11
- Slide Toolbar 11
- Slideshow album, slideshows, and slides 7
- Slideshow List 11
- Slideshow tab 13, 34

- Slideshow Toolbar 10
- Split Slideshow 20
- Starting a project 9

T

- Theme 8, 28
 - Customizing menus 29
 - Customizing your slide-shows 32
- Theme tab 12
- TWAIN 19

V

- Video Slideshow 16

W

- What's new? 6
- WIA 19
- Workspace 10
 - Burn tab 14
 - Organize tab 10
 - Capacity Bar 12
 - Slide Panel 11
 - Slide Toolbar 11
 - Slideshow List 11
 - Slideshow Toolbar 10
 - Theme tab 12